



*GPS III*  
PLUS

**Owner's  
Manual &  
Reference**



This manual is written for operating Software Version 2.0 or above, and is not suitable for earlier software versions.

GARMIN International, 1200 E. 151st Street, Olathe, Kansas 66062 USA

Tel: 913-397-8200

Fax: 913-397-8282

GARMIN (Europe) Ltd., Unit 5, The Quadrangle, Abbey Park, Romsey, Hampshire SO51 9AQ UK

Tel: 011-44-1794-519944

Fax: 011-44-1794-519222

GARMIN (Asia) Corp., 3F, No.1, Lane 45, Pao-Hsing Road, Hsin Tien, Taipei, Taiwan R.O.C.

Tel: 011-886-02-2917-4107

Fax: 011-886-02-2917-1758

Web Site Address: [www.garmin.com](http://www.garmin.com)

© 1999 GARMIN Corporation. All rights reserved. Except as expressly provided herein, no part of this manual may be reproduced, copied, transmitted, disseminated, downloaded or stored in any storage medium, for any purpose without the express written permission of GARMIN. GARMIN Corporation hereby grants permission to download a single copy of this manual and of any revision to this manual onto a hard drive or other electronic storage medium to be viewed and to print one copy of this manual or of any revision hereto, provided that such electronic or printed copy of this manual or revision must contain the complete text of this copyright notice and provided further that any unauthorized commercial distribution of this manual or any revision hereto is strictly prohibited.

Information in this document is subject to change without notice. GARMIN reserves the right to change or improve its products and to make changes in the content without obligation to notify any person or organization of such changes.

January 1999

Part # 190-00162-00 Rev. A

Printed in Taiwan.

# Thank You!

Thank you for choosing the GARMIN GPS III+ —the smallest, easiest-to-use GPS navigator for marine, automotive and outdoor use! The GPS III+ represents GARMIN's continuing commitment to provide quality navigation information in a versatile and user-friendly flexible design you'll enjoy for years. To get the most from your new GPS, take the time to read through the owner's manual in order to understand the operating features of the GPS III+. This manual is organized into three sections for your convenience:

**Section One** (Getting Started) introduces you to the basic features of the unit and provides a quick-start orientation to the GPS III+.

**Section Two** (Simulator Tour) provides a step-by-step lesson in how your new GPS III+ would operate in the real world by utilizing the built-in simulator mode.

**Section Three** (Reference) provides details about the advanced features and operations of the GPS III+ by topic.

Before getting started with your GPS, check to see that your GARMIN GPS III+ package includes the following items. If you are missing any parts, please contact your dealer immediately.

**Standard Package:**

- GPS III+ Unit with Detachable Antenna
- Wrist Strap
- GPS III+ Owner's Manual
- Quick Reference Card
- Velcro Mount
- PC Interface Cable



# INTRODUCTION

## Cautions



**CAUTION:** The Global Positioning System (GPS) is operated by the government of the United States, which is solely responsible for its accuracy and maintenance. The system is subject to changes which could affect the accuracy and performance of all GPS equipment. Although the GPS III+ is a precision electronic NAVigation AID (NAVAID), any NAVAID can be misused or misinterpreted and, therefore, become unsafe.



**WARNING:** For vehicular applications, it's the sole responsibility of the owner/operator of the GPS III+ to secure the GPS unit so that it will not cause damage or personal injury in the event of an accident. Do not mount the GPS III+ over airbag panels or in a place where the driver or passengers are likely to have an impact with it in an accident or collision. The mounting hardware provided by GARMIN is not warranted against collision damage or the consequences thereof.



**WARNING:** For vehicular operations, it is the sole responsibility of the operator of the vehicle to operate his or her vehicle in a safe manner, maintain full surveillance of all driving conditions at all times, and never become distracted by the GPS III+ to the exclusion of safe operating practices. It is unsafe to operate the GPS III+ while you are driving. Failure by the operator of a vehicle equipped with a GPS III+ to pay full attention to operating the vehicle and road conditions while the vehicle is in motion could result in an accident or collision with property damage and personal injury.

This device complies with Part 15 of the FCC limits for Class B digital devices. This equipment generates, uses, and can radiate radio frequency energy and, if not installed and used in accordance with the instructions, may cause harmful interference to radio communications. Furthermore, there is no guarantee that interference will not occur in a particular installation.

If this equipment does cause harmful interference to other equipment, which can be determined by turning the affected equipment off and on, the user is encouraged to try and correct the interference by relocating the equipment or connecting the equipment to a different circuit than the affected equipment. Consult an authorized dealer or other qualified service technician for additional help if these remedies do not correct the problem.

Operation of this device is subject to the following conditions: (1) This device may not cause harmful interference, and (2) this device must accept any interference received, including interference that may cause undesired operation.

The GPS III+ does not contain any user-serviceable parts. Repairs should only be made by an authorized GARMIN service center. Unauthorized repairs or modifications could void your warranty and authority to operate this device under Part 15 regulations.



# INTRODUCTION

## *Limited Warranty*

GARMIN Corporation warrants this product to be free from defects in materials and workmanship for one year from the date of purchase. GARMIN will, at its sole option, repair or replace any components which fail in normal use. Such repairs or replacement will be made at no charge to the customer for parts or labor. The customer is, however, responsible for any transportation costs. This warranty does not cover failures due to abuse, misuse, accident or unauthorized alteration or repairs.

THE WARRANTIES AND REMEDIES CONTAINED HEREIN ARE EXCLUSIVE AND IN LIEU OF ALL OTHER WARRANTIES EXPRESSED OR IMPLIED, INCLUDING ANY LIABILITY ARISING UNDER WARRANTY OF MERCHANTABILITY OR FITNESS FOR A PARTICULAR PURPOSE, STATUTORY OR OTHERWISE. THIS WARRANTY GIVES YOU SPECIFIC LEGAL RIGHTS, WHICH MAY VARY FROM STATE TO STATE.

IN NO EVENT SHALL GARMIN BE LIABLE FOR ANY INCIDENTAL, SPECIAL, INDIRECT OR CONSEQUENTIAL DAMAGES, WHETHER RESULTING FROM THE USE, MISUSE OR INABILITY TO USE THIS PRODUCT OR FROM DEFECTS IN THE PRODUCT. SOME STATES DO NOT ALLOW THE EXCLUSIONS OF INCIDENTAL OR CONSEQUENTIAL DAMAGES, SO THE ABOVE LIMITATIONS MAY NOT APPLY TO YOU.

To obtain warranty service, call the GARMIN Customer Service department (913-397-8200) for a returned merchandise tracking number. The unit should be securely packaged with the tracking number clearly marked on the outside of the package, and sent freight prepaid and insured to a GARMIN warranty service station. A copy of the original sales receipt is required as the proof of purchase for warranty repairs. GARMIN retains the exclusive right to repair or replace the unit or software or offer a full refund of the purchase price at its sole discretion. SUCH REMEDY SHALL BE YOUR SOLE AND EXCLUSIVE REMEDY FOR ANY BREACH OF WARRANTY

### INTRODUCTION

About This Manual	i
Cautions	ii
FCC Compliance	iii
Limited Warranty	iv

### GETTING STARTED

Unit Features	1
Keypad Usage / Display	2
Battery Installation	3
What is GPS?	4
Initialization	5
Main Page Sequence	7
Satellite Status Page	8
Position Page	9
Map Page	10
Compass Page	11
Highway Page	12
Main Menu	13

Marking Waypoint Positions	14
Going to a Waypoint	15
Active Route Page	16

### SIMULATOR TOUR . . . . .17

### REFERENCE

Satellite Status Page	25
Satellite Status Page Options	29
Position Page	30
Position Page Options	31
Map Page	33
Highway Exits	35
Map Page Options	37
Compass Page	41
Compass Page Options	42
Highway Page	43
Highway Page Options	44
Waypoints	45
Waypoint Options	50

# INTRODUCTION

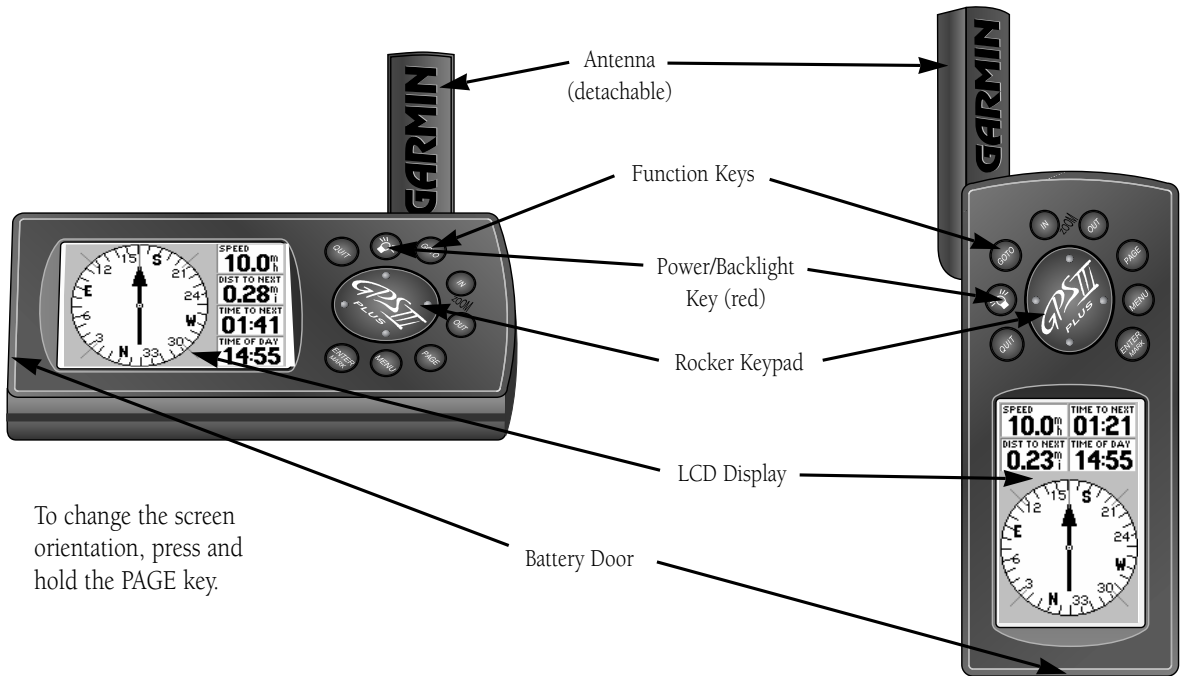
## Table of Contents

Nearest Waypoints . . . . .	.51
GOTO . . . . .	.53
GOTO Options . . . . .	.54
MOB . . . . .	.55
TracBack . . . . .	.56
Routes . . . . .	.58
Route Options . . . . .	.63
Active Route Page . . . . .	.64
Active Route Page Options . . . . .	.65
Main Menu . . . . .	.67
Setup Menu . . . . .	.72
<b>APPENDIX A:</b> Dashboard Mounting . . . . .	.82
<b>APPENDIX B:</b> Specifications . . . . .	.83
<b>APPENDIX C:</b> Wiring/Interfacing . . . . .	.84
<b>APPENDIX D:</b> Antenna/Remote Mounting . . . . .	.85
<b>APPENDIX E:</b> Messages . . . . .	.86
<b>APPENDIX F:</b> Map Datums . . . . .	.88
<b>APPENDIX G:</b> Navigation Terms . . . . .	.91
<b>APPENDIX H:</b> Index . . . . .	.93



# GETTING STARTED

## Unit Features



# GETTING STARTED

## Keypad Usage / Display



**(POWER)**— Red key turns the unit on and off, and controls three levels of screen backlighting intensity.



**(PAGE)**— Scrolls main pages in sequence and returns display from a menu/options page to a main page. Press and hold this key to change screen orientation.



**(MENU)**— Displays a menu of available options for the current page. Press twice to display the Main Menu.



**(GOTO)**— Displays the GOTO waypoint window, allowing you to select the destination waypoint. Press and hold this key to activate MOB feature.



**(ENTER/MARK)**— Activates highlighted fields and confirms menu options and data entry. Press and hold this key to mark present position as a waypoint.



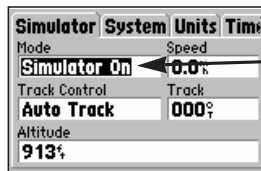
**(QUIT)**— Returns the display to a previous page or restores a data field's previous value.



**(IN and OUT)**— Allows you to zoom in/out through 24 scales on the Map Page. Also adjusts scale on the Highway Page.



**(ROCKER KEYPAD)**— Controls the movement of the cursor, is used to select options and positions, and to enter data.



Example of  
Cursor on the  
'Mode' Field

**CURSOR**— A solid black bar which can be moved up, down, left, and right with the keypad to select individual fields on the display (see above).

**DEFAULT**— A system-selected format, built into the operating software or the unit's memory, that will be followed unless the user chooses a different setting.

**FIELD**— The location on a page (see above) where a group of characters or option is entered and displayed.

**HIGHLIGHT**— The act of using the cursor to select a field for the purpose of entering data.

**SCROLL**— The act of moving through characters or options from a selected field.

**DATA ENTRY**— Entering data, such as waypoint names, typically begins and ends with the ENTER/MARK key. Use the rocker keypad to enter the actual data: UP/DOWN to change the highlighted character, RIGHT to move on to the next character.

The GPS III+ operates on 4 AA batteries (not included), which are installed at the base of the unit. These batteries provide up to 36 hours of continuous use. Rechargeable NiCad or lithium batteries may also be used.

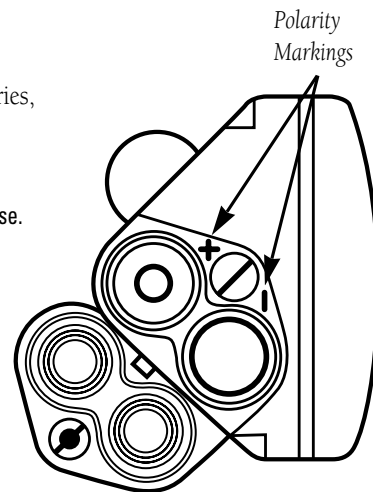


**NOTE:** The on-screen battery level indicator is calibrated for alkaline batteries, and will not be accurate when using NiCad or lithium batteries (see page 75).

### To install the batteries:

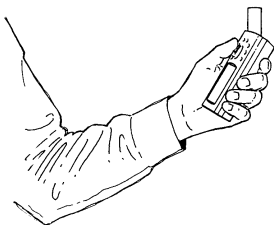
1. Flip up the metal ring at the base of the unit, and turn the ring 90° counterclockwise.
2. Install the batteries and close the battery compartment door. When replacing the GPS III+'s batteries, observe the polarity markings engraved in the plastic case.
3. Lock the door in the closed position by rotating the metal ring 90° clockwise.

Battery life varies due to a variety of factors, including temperature and backlighting. You may find that the battery life varies in different conditions and that lithium batteries provide longer life in colder conditions. An internal 10-year lithium battery will retain your data while you're changing batteries.



## GETTING STARTED

### What is GPS?



*Hold the receiver at a comfortable height with the antenna pointing up.*



*When new (or if a position cannot be determined after 10 minutes), the GPS III+ will prompt you to initialize the receiver. The unit needs a starting position to determine which satellites are in view.*

The Global Positioning System (GPS) is a system of 24 satellites which circle the earth twice a day in a very precise orbit and transmit information to earth. The GPS III+ must continuously “see” at least three of these satellites to calculate your position and track your movement. At times, additional satellites may be needed to determine a position.

By using an almanac (a timetable of satellite numbers and their orbits) stored in the receiver’s memory, the GPS III+ can determine the distance and position of any GPS satellite and use this information to compute your position.

Your GPS receiver can only see satellites above the horizon, so it needs to know what satellites to look for at any given time. To use this almanac data, your GPS needs to either be told its general location (“initialized”) or given the opportunity to find itself. Once you initialize the unit to a position, it will typically compute a fix within a few minutes. We’ll show you how to initialize your new GPS III+ on page 5.

Initialization is only necessary under the following conditions:

- The first time you use your receiver (new from the factory).
- After the receiver has been moved over 500 miles (with the power off) from the last time you used it.
- If the receiver’s memory has been cleared and all internally stored data has been lost.

Because the GPS III+ relies on satellite signals to provide you with navigation guidance, the receiver needs to have an unobstructed, clear view of the sky for best performance. In a nutshell, the GPS receiver’s view of the sky will generally determine how fast you get a position fix—or if you get a fix at all. GPS signals are relatively weak and do not travel through rocks, buildings, people, metal, or heavy tree cover, so remember to keep a clear view of the sky at all times for best performance.

Once the GPS III+ has calculated a position fix, you'll usually have anywhere from five to twelve satellites in view. The receiver will then continuously select the best satellites in view to update your position. If some of the satellites in view get blocked or "shaded," the receiver can simply use an alternate satellite to maintain the position fix. Although a GPS receiver needs four satellites to provide a three-dimensional (3D) fix, it can maintain a two-dimensional (2D) fix with only three satellites. A three-dimensional fix means the unit knows its latitude, longitude, and altitude, while a two-dimensional fix means the unit knows only its latitude and longitude.

### **Initializing Your GPS III+**

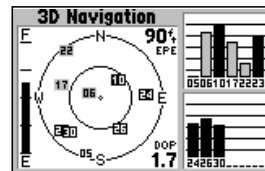
To initialize the GPS III+, take the receiver outside and find an open area where the antenna has a clear view of the sky. You may either hold the receiver at a comfortable height with the antenna pointing up (see page 4), or mount the receiver on the dash of a vehicle (Appendix A) or on a bike. (Likewise, when you use your GPS III+ in a vehicle, make sure the antenna is pointing up.)

#### **To turn the GPS III+ on, press and hold the red power key.**

The Welcome Page will be displayed while the unit conducts a self test. Once testing is complete, the Welcome Page will be replaced by a warning page, then by the Satellite Status Page. A message will inform you to "select initialization method". (If the initialization prompt has not automatically appeared, press MENU and highlight 'Initialize Position'.)

#### **To initialize your unit:**

1. Press ENTER to acknowledge the message and see a list of initialization options.
2. Use the rocker keypad to highlight 'Use Map', and press ENTER.
3. Use the rocker keypad to point the map cursor to your approximate location (within 250 miles). You may also wish to use the IN and OUT zoom keys to make it easier to identify your approximate position.
4. Press ENTER to select the position and begin searching for satellites.



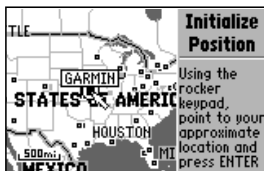
*Check the Satellite Status Page for '2D Navigation' or '3D Navigation' to verify a position fix.*



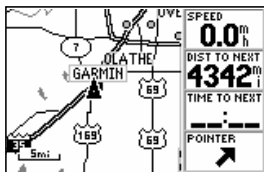
*The Welcome Page is displayed when the GPS III+ is first turned on. During this time the receiver is conducting a self test.*

# GETTING STARTED

## Initialization



To initialize the GPS III+, designate your approximate location directly on the map display. Use the rocker keypad and IN/OUT zoom keys to position the cursor on the map.



Once the GPS III+ has a position fix, it will automatically transition from the Satellite Status Page to the Map Page.

This usually provides a position fix in 1 minute. You'll know you have a fix when the unit automatically transitions from the Satellite Page to the Map Page (shown left). Your receiver is now ready to use!

### To turn the unit off:

1. Press and hold the red power key for 1 second.

### Troubleshooting

If you have trouble initializing or getting a position fix, check the following:

- **Does the receiver have a clear view of the sky?**

If there are large buildings or mountains, or if there is heavy tree cover, the receiver may not be receiving enough satellite signals to calculate a fix. Also, if you're using the GPS III+ on a car dash, make sure the unit is placed so that it has the clearest possible view of the sky. Your GPS will only be able to detect satellites that it can "see" through your vehicle's windshield. Depending on the slope of your dash or the overall surface area of the window, it may be necessary to mount an external antenna on your vehicle's roof or trunk in order to give the unit a better view of the sky. (Contact your local GARMIN dealer and inquire about the GA 26 low-profile remote antenna, part number 010-10052-02.)

- **Have you selected the right area when initializing?**

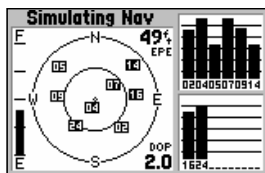
Check for the correct approximate position on the Map Page (press PAGE until the Map Page appears; see pages 7 and 10), or reselect your approximate location to restart the initialization.

- **Have you moved more than 500 miles from the last calculated position with the receiver off?**

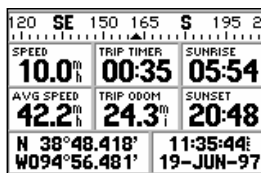
Reinitialize the receiver by selecting your approximate position on the map, or select 'AutoLocate' from the Satellite Status Page options (see page 29).

# GETTING STARTED

## Main Page Sequence

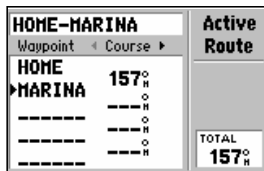


Satellite Status Page

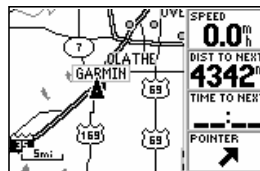
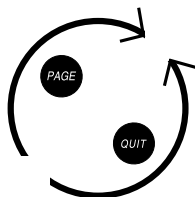


Position Page

PAGE

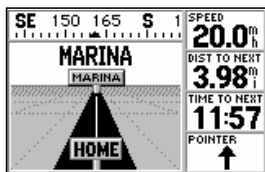


Active Route Page

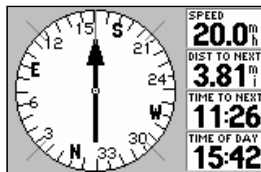


Map Page

Press the PAGE key to move through each of the main pages in normal fashion.



Highway Page



Compass Page

QUIT

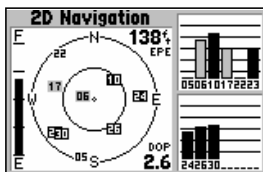
**To turn the GPS III+ back on, press and hold the red power key.**

The GPS III+ features six main pages which are linked together in a chain. You can quickly scroll through the pages in either direction using the PAGE or QUIT keys. Let's briefly tour each of these pages in order to give you some insight into how they help you navigate. We'll go over all of them in more detail in the reference section.

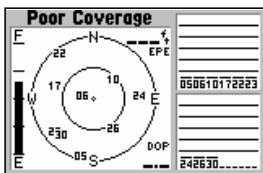
Press the QUIT key to sequence through the main pages in reverse order.

# GETTING STARTED

## Satellite Status Page



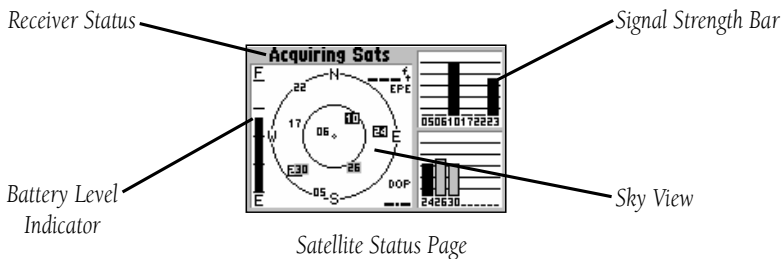
The signal strength bars give you an indication of what satellites are visible to the receiver, whether or not they're being used to calculate a position fix, and the signal quality.



If satellite reception is lost, or an insufficient number of satellites are available, you will be alerted with a 'Poor Coverage' receiver status and message.

Let's start with the Satellite Status Page, which is the page you'll view while your unit is getting a position fix. If you're not already on this page, press PAGE or QUIT until it appears. The Satellite Status Page shows you status information that helps you understand what the receiver is doing at any given time, and it's a page that you'll want to occasionally refer back to as you use your unit. It features a sky view of available satellites, corresponding signal strength bars, the status of your current position fix (acquiring, 2D, 3D, etc.), and your estimated position error (EPE). You can also tell how much battery power is remaining, and you can adjust the screen contrast/backlighting by pressing the rocker keypad.

Satellites are indicated on the sky view and the signal strength bars by their corresponding number, from 01 through 32. The sky view shows where it is looking in the sky for each satellite, by indicating the direction and elevation (angle above the horizon). The signal strength bars depict the relative strength of the signal from each satellite being received. The taller the bar, the stronger the signal.





# GETTING STARTED

## Position Page

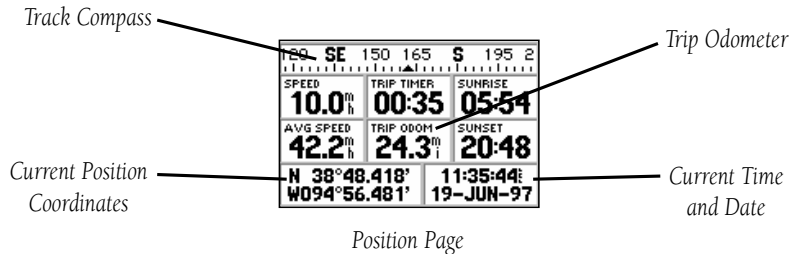
The Position Page shows you where you are, what direction you're heading, and how fast you're going—and it's the page you'll want to use when you don't have a destination selected.

A graphic compass display at the top of the page shows your direction of travel (track) while you're moving, while six user-selectable data fields below display your current speed, average speed, trip odometer, trip timer, and sunrise/sunset times at your current position. "User-selectable" means you can change them to display other information. We'll cover these fields more in the reference section.

Below the user-selectable data fields are additional data fields to display your current position, along with current time and date. The current position readout can be in latitude/longitude, UTM/UPS, Maidenhead or one of several regional grids. Current time and date can be in local time or UTC (Coordinated Universal Time).

NW 330 345 N 015 030		
SPEED	TRIP TIMER	SUNRISE
0.0 <sup>m</sup> / <sub>h</sub>	01:28	05:56
AVG SPEED	TRIP ODOM	SUNSET
44.4 <sup>m</sup> / <sub>h</sub>	65.0 <sup>m</sup> / <sub>i</sub>	20:49
15 S 033143Z		14:11:23
UTM 4297146		25-JUN-97

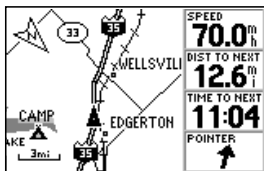
Position Page showing UTM coordinates for use with USGS topographic maps, etc.



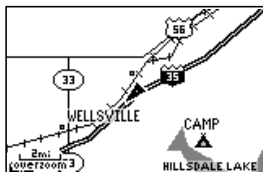
The trip odometer, trip timer and average speed readings can all be reset from the 'Trip Computer' option on the Main Menu. See page 72.

# GETTING STARTED

## Map Page



With the map oriented to 'track up', the pointer always points up and the map rotates to your current direction of travel (track). Note the north indicator on the map.



You can also select a full-screen map from the Map Page Options. See page 37.

The Map Page shows your movement using a real-time track log (an electronic breadcrumb trail that appears directly on the map as you're traveling), and your present position as a pointer icon in the center of the map. The Map Page also shows any nearby lakes, rivers, highways and towns. Use the zoom keys (IN and OUT) to adjust the map to the desired scale.

### To change the map scale:

1. Press the IN zoom key to select a smaller scale and more detail for a smaller area.
2. Press the OUT zoom key to select a larger scale and display a larger area.

The map can be oriented with the top of the page always pointing north, oriented along your desired course, or it can automatically rotate to keep your current direction of travel (track) at the top of the screen. The default setting is 'North Up', which keeps the top of the page always pointing north.

Nearby waypoints are depicted on the map with any one of over 50 different symbols, with the waypoint name shown directly above the symbol. We'll cover more about the GPS III+'s waypoint features and the Map Page in the reference section of this manual.



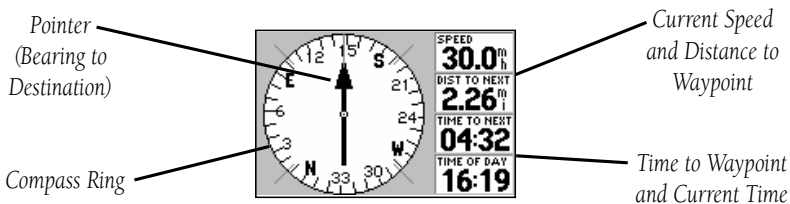
Map Page

# GETTING STARTED

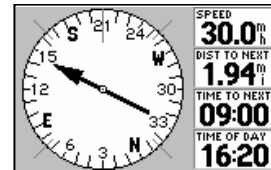
## Compass Page

The GPS III+ features two different navigation pages: Compass and Highway. The Compass Page is first. This page provides graphic steering guidance to a destination waypoint, with an emphasis on the bearing to your destination and current direction of travel. (The Highway Page places greater emphasis on the straight-line desired course and the distance and direction you are off course.) The middle of the page features a rotating 'compass ring' that shows your course over ground (track) while you're moving, and a bearing pointer that indicates the direction of the destination (bearing) relative to the course over ground. The compass ring and pointer arrow work independently to show—at a glance—the direction of your movement and the direction to your destination. For instance, if the arrow points up, you are going directly to the waypoint. If the arrow points any direction other than up, turn toward the arrow until it points up—then continue in that direction.

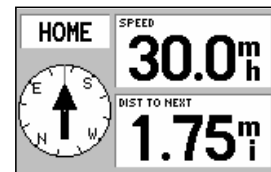
The current speed and distance to the destination waypoint are displayed at the top of the screen. The bottom of the page displays the time to the destination waypoint and the current time. This page provides better steering guidance than the Highway Page when travelling at slower speeds and/or when making frequent directional changes.



Compass Page



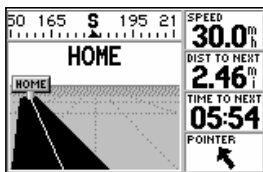
*If the bearing pointer points up, you are going directly to your destination. If not, turn toward the arrow until it points up, then continue in that direction.*



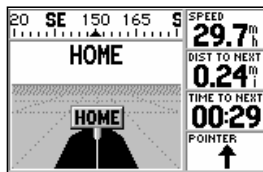
The 'Big Numbers' option (available from the Compass Page Options) shows a much smaller compass display and larger data field characters. See page 42.

# GETTING STARTED

## Highway Page



If you move off course the highway display will move, indicating the direction you are off course. To stay on course, simply move toward the center of the highway.

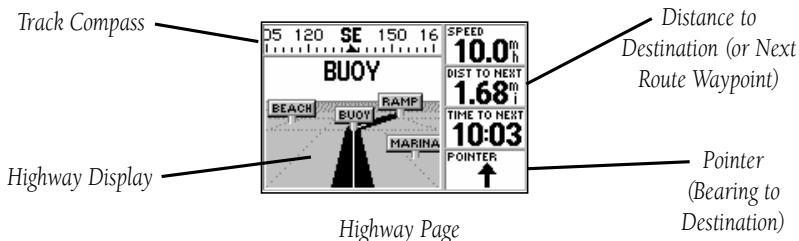


As you approach your destination, the graphic highway will stop at the destination waypoint. You have arrived when the waypoint is at the bottom center of the display.

The GPS III+'s Highway Page also provides graphic steering guidance to a destination waypoint. As you head toward your destination, the middle of the screen provides visual guidance to your waypoint on a moving graphic "highway." Your present position is at the bottom center of the highway display. The line down the middle of the highway represents your desired course. As you navigate toward a waypoint, the highway will actually move—indicating the direction you're off course. To stay on course, simply move toward the center of the highway.

The top of the page indicates speed and distance to your destination (or the next waypoint in a route), along with a track compass showing current direction of travel. Directly below the distance reading is the time required to reach your destination (or the next waypoint in a route), in hours/minutes or minutes/seconds. The pointer at the bottom of the page also shows the bearing to your destination, relative to your current track. If the pointer points straight ahead, you're heading directly to your destination!

Use the Highway Page as your primary navigation page (in lieu of the Compass Page) when your main concern is following a defined course.



The GPS III+'s Main Menu provides access to additional pages (submenus) that are used to create or edit waypoints, create routes, list nearby waypoints, review trip information and timers or make changes to system settings. These six pages are divided into categories by function. The waypoint and route management features of the Main Menu are described in more detail in the Reference section of this manual. Let's take a look at the Main Menu and one of its submenu items.

### To view the Main Menu:

1. Press the MENU key twice.

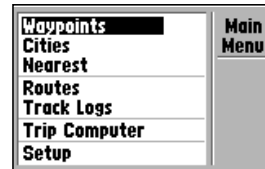
### To select a submenu item from the Main Menu:

1. Highlight the desired item using the rocker keypad, and press ENTER.
2. To return to the Main Menu, press QUIT.

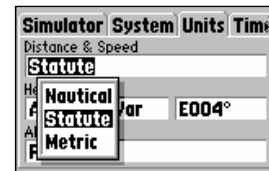
The 'Setup' option provides a list of choices (presented as a series of 'file tabs') to perform various configuration settings including system settings, selection of position format and units of measure, time display, setting various alarms, enabling the built-in simulator feature and interface options with other equipment:

### To change units of measure for distance and speed:

1. Select the 'Setup' option from the Main Menu (as described above), and press ENTER.
2. Highlight the 'Units' tab with the rocker keypad. The units settings are automatically displayed.
3. Highlight the 'Distance & Speed' field using the rocker keypad, and press ENTER. A pop-up menu appears showing the available options.
4. Select the desired option using the rocker keypad, and press ENTER.



The Main Menu provides access to seven additional (submenu) pages.



The 'Setup' option provides a list of menu choices to perform various configuration settings, such as changing units of measure for distance and speed.

# GETTING STARTED

## Marking Waypoint Positions

Mark Waypoint	
■ HOM	Done
Comment	Reference
CRTD 20:13	-----
29-AUG-97	Bearing
Position	000°
N 38°51.333'	Distance
W094°47.941'	0.00°

Each waypoint stored in memory is identified by a unique name, up to six characters long (letters and/or numbers).

Waypoint Symbol	
☑	Residence
🍽️	Restaurant
🚻	Restroom
🌳	Scenic Area
🎓	School

Each waypoint may also be assigned a custom waypoint symbol, making it easy to identify the waypoint on the Map Page.

GPS is really about marking and going to places called 'waypoints'. Before we can use the GPS III+ to guide us somewhere, we have to mark a position as a waypoint. Your GPS III+ can hold up to 500 waypoints.

### To mark your present position:

1. Press and hold the ENTER/MARK key. The Mark Waypoint Page will appear, with a default three-digit name for the new waypoint in the upper-left portion of the page.

### To rename the waypoint:

1. Use the keypad to highlight the name field, and press ENTER.
2. Enter the new waypoint name using the rocker keypad, and press ENTER.

Each waypoint may also be assigned a custom waypoint symbol for easy waypoint recognition on the Map Page.

### To change the waypoint symbol:

1. Highlight the waypoint symbol field (immediately to the right of the waypoint name field) and press ENTER.
2. Select the desired symbol, and press ENTER.
3. Move the cursor to the 'DONE?' prompt, and press ENTER.

The Mark Position Page will be replaced with the page displayed before you pressed ENTER/MARK to mark your position. The new waypoint is now stored in the GPS III+'s memory.

# GETTING STARTED

## Going to a Waypoint

Once you've stored a waypoint in memory, you can use the GPS III+ to guide you to it by using the GOTO feature. A GOTO is really nothing more than a straight-line course from your present position to the destination you've selected. A GOTO can be performed several ways: by specifying the destination from the GOTO Page, graphically from the map display or by highlighting the waypoint name on any page (such as the Nearest Waypoints List or Nearest Cities List).

### To select a GOTO destination from the GOTO Page:

1. Press GOTO. This captures your current position as the starting point for your trip.
2. Highlight the 'All' tab, using the rocker keypad, to list all waypoints currently stored in memory.
3. Highlight the desired waypoint, using the rocker keypad, and press ENTER.

### To select a GOTO destination from the Map Page:

1. With the Map Page displayed, use the rocker keypad to place the cursor over the desired destination waypoint. (If no waypoint exists at the destination location, the GPS III+ will automatically create one, named 'MAP' in the step below.)
2. Press GOTO, and then ENTER to navigate to the selected location.

### To GOTO a listed waypoint on the Nearest Waypoints List or Nearest Cities List:

1. With the Nearest Waypoints List or Nearest Cities List displayed (see pages 51 and 52), use the rocker keypad to highlight the desired waypoint or city.
2. Press GOTO, and then ENTER to navigate to the selected location.

Once the GOTO destination is selected, use the Map Page, Compass Page and/or Highway Page to keep track of your progress as you head toward your destination.



To select a destination from all waypoints stored in memory, highlight the 'All' tab, then select the desired waypoint and press ENTER.

Waypoints	Cities	Exits
Waypoint	Bearing	Distance
FISH	337°	470°
MARINA	194°	2.4°
ELKRVR	149°	2.5°
BUOY	165°	2.8°
RAMP	170°	5.7°

To GOTO one of the listed 'Nearest' cities, highlight the desired city, press GOTO and then ENTER. A new waypoint will be created using the city name. Cities with names longer than six characters will be abbreviated.

# GETTING STARTED

## Cancel GOTO/Active Route



To cancel the current GOTO destination, select 'Cancel GOTO' from the GOTO Options Page.

FISH-RAMP		Active Route
Waypoint	Distance	
FISH	---	
►BUOY	2.89 <sup>m</sup>	
RAMP	5.79 <sup>m</sup>	
-----	---	
-----	---	
TOTAL		5.79 <sup>m</sup>

Use the LEFT/RIGHT keys on the rocker keypad to select the desired data item. Available items include course, distance, fuel, and sunrise/sunset times.

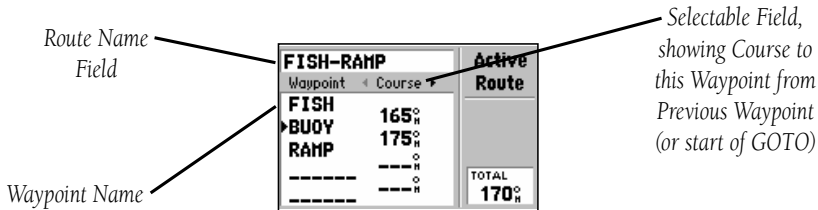
To cancel the current GOTO destination, simply select another destination. If no destination is currently desired, or you want to resume a previously selected route, the GOTO operation may be cancelled from the GOTO Options Page.

### To cancel the current GOTO destination:

1. Press GOTO.
2. Press MENU.
3. Highlight 'Cancel GOTO' and press ENTER.

### Active Route Page

The last of the six main pages is the Active Route Page. This page shows the GOTO waypoint or each waypoint of a route, with waypoint name and the course along each leg (segment) of the route. When using a route, the current destination is marked with an arrow on the left-hand side of the screen. If no destination has been specified using the GOTO key or a route, no waypoints will be listed on the page. (For more information on using routes, see page 58 in the Reference section.)



Active Route Page



The GPS III+ is a powerful navigation system providing detailed mapping information in a convenient, compact package. This simulator tour is designed to show you the basic features of your new GPS III+ during a simulated trip. The simulator tour assumes that the receiver has been properly initialized as outlined in the Getting Started section of this manual, and that you have not changed any of the factory default settings. If you have changed any settings (position formats, units of measure, etc.), the descriptions and pictures in the tour may not match your configuration.

Once you're familiar with the primary functions of the GPS III+, you'll be ready to use your new receiver on a real trip to a destination of your choice. The Reference section of this manual may be consulted for any additional questions you may have, or to learn about the more advanced features of the GPS III+. For now, let's get started on the Simulator Tour!

If the GPS III+ is currently off, we'll need to start by turning it on.

**To turn the GPS III+ on, press and hold the red power key.**

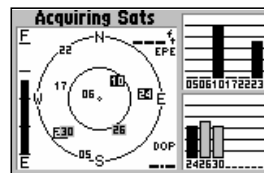
The Welcome Page will be displayed while the unit conducts a self test. Once testing is complete, the Welcome Page is replaced by a warning page, then by the Satellite Status Page. Since we'll be using the simulator mode, we don't need to wait for the receiver to acquire satellites.



**WARNING:** Keep in mind that the GPS III+ does not track satellites in simulator mode and should never be used for actual navigation. The GPS III+ cannot be turned on in simulator mode. If you forget to change back to normal operation before shutting the receiver off, it will automatically return to normal mode the next time you use the receiver.



The Welcome Page is displayed when the GPS III+ is first turned on. After a brief self-test, it is replaced by a warning page for about 10 seconds. To skip the warning page, press ENTER.



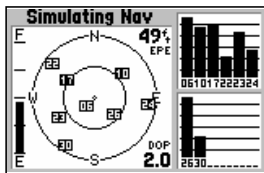
The Satellite Status Page appears next. For simulator mode operations, there's no need to wait for the GPS III+ to acquire satellites.

# SIMULATOR TOUR

## Selecting Simulator Mode



Select 'Start Simulator' from the Satellite Status Page Options to enable the built-in simulator.



The simulator imitates satellite reception and shows that information on the Satellite Status Page. Remember, in this mode the GPS III+ is **not** actually tracking satellites.

### To select the simulator mode:

1. Press MENU to list the options for the Satellite Status Page.
2. Highlight 'Start Simulator' with the rocker keypad, and press ENTER.
3. Press ENTER again to acknowledge the simulator warning message.

Let's look at the sequence of pages again. The PAGE and QUIT keys are used to find your way around on the GPS III+.

### To cycle through the main pages:

1. Press PAGE to move through each of the main pages in normal fashion.
2. Press QUIT to sequence through the main pages in reverse order.

In normal mode operation, the GPS III+ would automatically sequence from Satellite Status Page to Map Page once enough satellites were received to determine your position. At that point the receiver is ready to use for navigation. Since we're in simulator we won't see that automatic sequence of steps, but as you cycle through the main pages, notice that the simulator imitates satellite reception and shows that information on the Satellite Status Page.

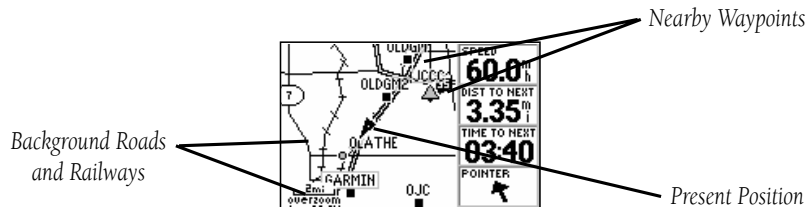
The Position Page will show the last known position as a starting location. If you've already initialized the receiver, as outlined in the Getting Started section, the starting location should be very close to your current position! We'll use this starting location from which to begin our simulated trip. Let's move on to the Map Page to see where we are, create a destination and explore the navigation features of the GPS III+.

### To select the Map Page, press PAGE repeatedly until it appears.

# SIMULATOR TOUR

## Using the Map Page

The GPS III+'s Map Page combines digital charting with a number of user-selectable features. Before we select our destination and begin navigating toward it, let's take a look at some of those features.



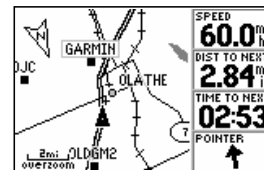
The map display shows your present position using a pointer icon in the center of the screen. The Map Page also shows any nearby lakes, rivers, highways and towns. Use the zoom keys (IN and OUT) to adjust the map to the desired scale. The current scale is indicated in the lower-left corner.

### To change the map scale:

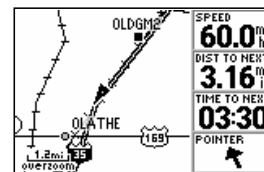
1. Press the IN zoom key to select a smaller scale and display a smaller geographic area.
2. Press the OUT zoom key to select a larger scale and display a larger geographic area.

The map can be oriented with the top of the page always pointing north ('North Up'), oriented along your desired course ('Course Up'), or it can automatically rotate to keep your current direction of travel at the top of the screen ('Track Up').

Nearby waypoints are depicted on the map with any one of over 50 different symbols, with the waypoint name displayed directly above the symbol. Let's create a waypoint directly on the map display to see how that process works, then we'll navigate to this new waypoint.



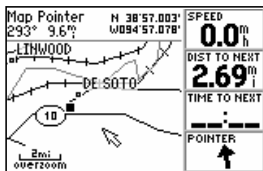
In the 'Track Up' orientation, the map is automatically rotated to keep your current direction of travel at the top of the screen. Note the north indicator in upper-left corner.



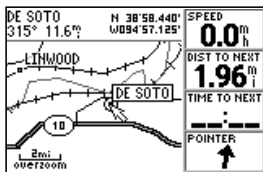
Use the IN/OUT zoom keys to change the map scale. The current scale appears in the lower-left corner of the map display.

# SIMULATOR TOUR

## Creating a Waypoint



Use the rocker keypad to pan to other areas on the map display. When panning an on-screen arrow appears for reference, along with a data field above the map.

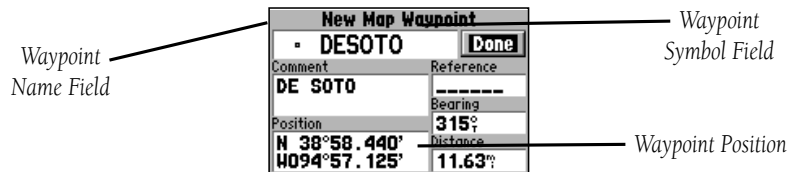


Place the panning arrow over an on-screen item to display a descriptive name.

### Select a five mile scale by pressing zoom IN or OUT repeatedly.

Working from the Map Page is a simple process that centers around the use of a reference “arrow”. Controlled by the rocker keypad, the reference arrow is an important tool allowing you to pan to other areas on the map display, create waypoints, view waypoint information and create routes. To get a feel for using the Map Page and the arrow, try the following exercise:

1. Using the rocker keypad to move the arrow, try following a highway (or other feature) near your position. Simply press and hold one side of the rocker keypad to move more quickly. Notice how a data field appears above the map, showing the bearing and distance from present position to the cursor, along with the latitude/longitude of the arrow's position.
2. Using the rocker keypad, move the arrow in any direction until you find a nearby city or town. Once you find a nearby city or town, place the pointer on it to highlight the location. Now, press ENTER to create a waypoint at the arrow location and display the New Map Waypoint Page.



3. If the name of the city or town is longer than six characters, the GPS III+ will abbreviate the name when it creates the waypoint. (If you select an open location on the map, where no city, town or other feature is located, a three-digit number is pre-assigned to the new waypoint created at the panning arrow location. To change the name, highlight the waypoint name field, press ENTER and use the rocker keypad to enter a new name – UP/DOWN to change the first character, RIGHT to move to the next character, and repeat. Once the new name is spelled out, press ENTER.)

4. A city symbol is assigned to the new waypoint, but let's use a special symbol to identify it. Highlight the waypoint symbol field, using the rocker keypad, and press ENTER. Use UP/DOWN on the rocker keypad to select the 'Information' icon (?) and press ENTER.

5. To save the new waypoint, highlight 'Done' with the rocker keypad and press ENTER.

Now that we've created our new waypoint, let's see how the GPS III+ is used to navigate to it. The reference arrow can also be used to GOTO any point on the map—even without a waypoint already at that location—by simply pressing GOTO. (We won't try that here. A waypoint named 'MAP' is automatically created, so all the previous steps for creating and naming a waypoint wouldn't be needed. You might want to experiment with this procedure at the end of the Simulator Tour.) For the Simulator Tour, we'll stick with the waypoint we just created.

### To select the GOTO destination:

1. Press GOTO.
2. If the 'All' file tab is not selected, use the rocker keypad to highlight this tab. ('All' will display a list of all waypoints currently stored in memory.)
3. Highlight the new waypoint you just created using the rocker keypad, and press ENTER.

Notice that a course line appears on the map display showing the way to our destination. Imagine you're about to depart. Maybe you're heading out from the marina or you're about to venture into the wilderness. What if you want to return to your present position when you're done for the day? You have two options available:

- You can mark your present position now and save it as a waypoint, or
- You can use the TracBack feature at the end of the day to retrace your steps – following the same path you travelled, but in reverse.

For now, we'll mark our present position and save it as a waypoint. (You might want to experiment with the TracBack feature later. It's described on page 56.)



You can select a special symbol to identify the waypoint on the Map Page.



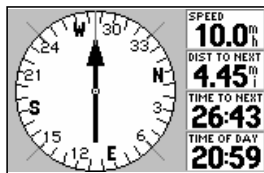
To select a GOTO destination, press GOTO and highlight the desired waypoint on the list. (You may also need to select the 'All' file tab on the GOTO Page, to see all waypoints currently in memory.)

# SIMULATOR TOUR

## Marking Present Position

Mark Waypoint	
001	Done
Comment	Reference
CRTD 20:15	-----
29-AUG-97	Bearing
Position	000°
N 38°51.333'	Distance
W094°47.941'	0.00°

To mark your present position and save it as a waypoint, press and hold ENTER. A three-digit name is automatically assigned to the waypoint.



From the Compass Page you can increase/decrease the simulated speed using the UP/DOWN keys on the rocker keypad.

### To mark your present position:

1. Press and hold the ENTER/MARK key. The Mark Waypoint Page will appear, with a default three-digit name for the new waypoint in the upper-left portion of the page.

Let's call our present position 'HOME'. (If you were at home when you initialized your GPS III+, you might want to keep this waypoint in memory for future use!)

### To rename the waypoint and change its symbol:

1. Use the keypad to highlight the name field, and press ENTER.
2. Enter the new waypoint name ('HOME') using the rocker keypad, and press ENTER. (Remember to use UP/DOWN to change the character and RIGHT to move to the next character field.)
3. Highlight the waypoint symbol field and press ENTER.
4. Select the 'Residence' symbol, and press ENTER.
5. Move the cursor to the 'DONE?' prompt, and press ENTER.

Now we have two waypoints in memory and on the map: the city location we saved earlier and 'HOME'. It's about time we get started, so let's plug a speed into this simulator to animate the displays!

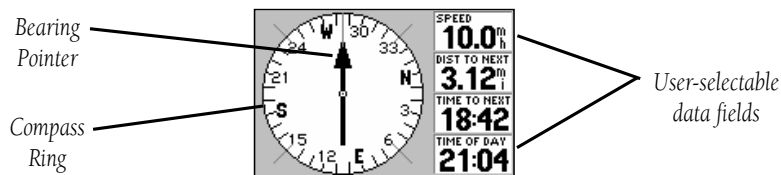
### To enter a simulated speed and animate the displays:

1. Press PAGE repeatedly until the Compass Page appears.
2. Enter a simulated speed of '10' (mph or knots) using the rocker keypad. (Press UP on the rocker keypad once to select '10'. The speed readout is on the upper right corner of the Compass Page.)
3. Press PAGE (or QUIT) repeatedly to return to the Map Page.

Notice the information on the map display is slowly moving? That's how it would look in actual use as well. The background map information and nearby waypoints will move across the screen, while your current position remains fixed in the center.

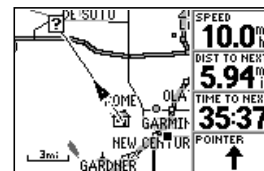
The other primary navigation screens are the Compass and Highway pages, with the Compass Page appearing first in the sequence of main pages.

**To view the Compass Page, press PAGE.**

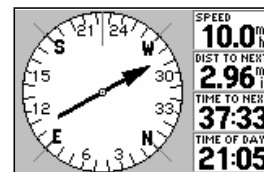


The GPS III+’s Compass Page provides graphic steering guidance to a destination waypoint. The middle of the page features a rotating ‘compass ring’ that shows your course over ground (track) while you’re moving, and a bearing pointer that indicates the direction of the destination (bearing) relative to the course over ground. The compass ring and pointer arrow work independently to show—at a glance—the direction of your movement and the direction to your destination. If the arrow points up, you are going directly to the waypoint. If the arrow points any direction other than up, turn toward the arrow until it points up—then continue in that direction. The distance to the next waypoint, time to the next waypoint and current speed are displayed to the right of the graphic compass display. To see how all this works on our simulated trip, let’s head off course and watch the displays change.

**To move off course / on course in simulator mode, use the LEFT/RIGHT keys on the rocker keypad.**



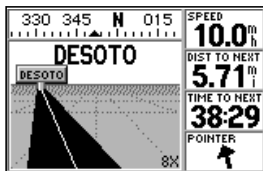
The background map moves while keeping your current position at the center of the map display.



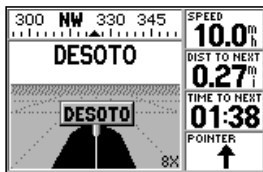
The Compass Page will also guide you to your destination. The rotating ‘compass ring’ shows the direction of travel (track) and the arrow points to your destination (bearing).

# SIMULATOR TOUR

## Highway Page



Use the LEFT/RIGHT keys on the rocker keypad to move off course / on course. To return to your course, steer toward the highway centerline.



When you reach your destination, the highway will end at the waypoint marker. Also note the 'distance to next' waypoint readout. If you pass the waypoint the pointer will swing around, pointing down.

**To view the Highway Page, press PAGE.**

The Highway Page provides a graphic highway display that shows your movement relative to the desired course. The line down the middle of the highway represents your desired course. As you navigate toward your destination, the highway will actually move, indicating the direction you're off course. To stay on course, simply steer toward the center of the highway. As you approach the waypoint, the highway will end at the final destination. When the waypoint marker is at the bottom center of the highway display, you've arrived at your destination. A track compass also shows your current track directly above the highway display, making it easy to see at a glance which way you're headed.

The pointer arrow at the bottom of the page indicates the direction to the destination waypoint (bearing) relative to the direction you are moving (track). If the pointer points straight ahead, you're heading directly to the waypoint. If not, turn in the direction of the pointer and the pointer will swing around, pointing straight ahead as you begin moving toward the destination waypoint. Try moving on course/off course again using the rocker keypad and watch as the highway display and bearing pointer change.

That's it! You've covered the basics and you're ready to venture off on your own. Operating the GPS III+ is just as simple as you've seen here in the Simulator Tour, but in real applications you won't need to change speed and track with the rocker keypad. That's all done automatically utilizing information from the GPS satellites as you move about.

Before ending the tour, try a few experiments of your own, such as going back to the 'HOME' waypoint, retracing your steps utilizing the TracBack feature, or creating a few more waypoints. Use the Reference section of this manual for more ideas.

**To end the Simulator Tour, turn the GPS III+ off with the red power key.**



The GPS III+'s Satellite Status Page provides a visual reference of various receiver functions, including current satellite coverage, receiver operating mode, battery level and position accuracy. As the receiver locks onto satellites, a signal strength bar will appear for each satellite in view, with the appropriate satellite number (01-32) underneath each bar. The progress of satellite acquisition is shown in three stages:

- No signal strength bars—the receiver is looking for the satellites indicated.
- Hollow signal strength bars—the receiver has found the satellite(s) and is collecting data.
- Solid signal strength bars—the receiver has collected the necessary data and the satellite(s) is ready for use.

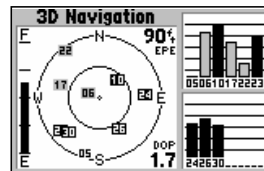
Each satellite has a 30-second data transmission that must be collected (hollow bar status) before that satellite may be used for navigation (solid bar status). Once a fix has been calculated, the GPS III+ will then update your position, track, and speed by selecting and using the best satellites in view. You can also access the GPS III+'s backlight and contrast feature from this page.

### To adjust the screen contrast and/or backlighting:

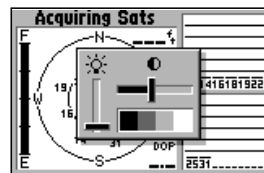
1. Press LEFT or RIGHT on the rocker keypad to adjust the level of contrast, and press ENTER to save the new contrast setting.
2. Press UP or DOWN on the rocker keypad to adjust the level of backlighting, and press ENTER to save the new backlight setting.

### Sky View and Signal Strength Bars

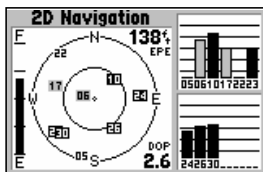
The sky view and signal strength bars give you an indication of what satellites are visible to the receiver, whether or not they are being used to calculate a position fix, and the signal quality. The satellite sky view shows a bird's-eye view of the position of each available satellite relative to the unit's last known position. The outer circle represents the horizon (north up); the inner circle 45° above the horizon; and the center point directly overhead.



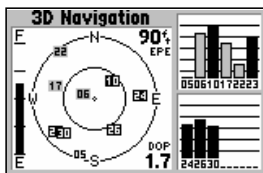
The Satellite Status Page shows where the satellites are and how strong the signal is from each one. A solid signal bar means the satellite is ready to use.



Use the LEFT/RIGHT keys on the rocker keypad to adjust the screen contrast and the UP/DOWN keys to adjust the backlighting. Press ENTER to save the settings.



'2D Navigation' means the GPS III+ has determined a horizontal position (latitude/longitude), but is unable to determine altitude. Additional satellites may be needed.



'3D Navigation' means the GPS III+ has determined a horizontal and vertical position (latitude, longitude and altitude). The receiver is ready for navigation.

You can use the sky view to help determine if any satellites are being blocked, and whether you have a current position fix (indicated by a '2D Navigation' or '3D Navigation' in the status field). You can also set the sky view to a 'Track Up' configuration, causing the top of the sky view to align along your current track heading.

When the receiver is looking for a particular satellite, the corresponding signal strength bar will be blank and the sky view indicator will not be highlighted. Once the receiver has found the satellite, a hollow signal strength bar will appear, indicating that the satellite has been found and the receiver is collecting data from it. The satellite number in the sky view will appear highlighted. As soon as the GPS III+ has collected the necessary data to calculate a fix, the status field will indicate a 2D or 3D status. (For '2D', you may need to enter your altitude. See page 29.)

### Receiver Status

Receiver status is indicated at the top left of the page. The status will be shown as one of the following conditions:

**Searching**— the GPS III+ is looking for any available satellites in view.

**AutoLocate**— the GPS III+ is initializing and collecting new almanac data. This process can take up to 5 minutes, depending on the satellites currently in view.

**Acquiring**— the receiver is collecting data from available satellites, but has not collected enough data to calculate a position fix.

**2D Navigation**— at least three satellites with good geometry have been locked onto and a 2-dimensional position fix (latitude and longitude) is being calculated. '2D Diff' will appear when you are receiving DGPS corrections in 2D mode.

**3D Navigation**— at least four satellites with good geometry have been locked onto, and your position is now being calculated in latitude, longitude and altitude. '3D Diff' will appear when you are receiving DGPS corrections in 3D mode.

**Poor GPS Coverage**— the receiver isn't tracking enough satellites for a 2D or 3D fix due to bad satellite geometry.

**Not Usable**— the receiver is unusable, possibly due to incorrect initialization or abnormal satellite conditions. Turn the unit off and back on to reset, and reinitialize the receiver if necessary.

**Simulating Nav**— the receiver is in simulator mode.

### 'Need to Select Initialization' Prompt

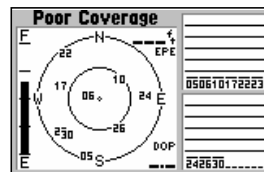
If no satellites are received for several minutes (or an insufficient number of satellites are received to determine a position fix) a message will appear, prompting you to initialize the receiver (see page 5). This allows you to specify a starting location from which to search for satellites, or to enable the AutoLocate feature, and is useful if you have traveled over 500 miles with the receiver off. (This message will automatically appear when you first use your GPS III+. The prompt may also appear during normal use if the antenna is shaded or the unit is used indoors.)

### Battery Level Indicator

The Satellite Status Page also features a battery level indicator, located to the left of the sky view, which displays the strength of the unit's batteries. The battery indicator will not appear if the receiver is operating on external power.



**NOTE:** The battery level indicator is calibrated for alkaline batteries. NiCad and lithium batteries will display the battery level differently due to voltage differences. To display battery level accurately select the appropriate type, as described on page 75. The GPS III+ features an internal 10-year lithium battery that will maintain the unit's memory when the receiver is not running off batteries or external power.



'Poor GPS Coverage' means the receiver isn't tracking enough satellites for a position fix. Check for obstructions, such as trees, buildings, etc.



This message appears if a position fix cannot be determined after several minutes. After acknowledging the message, select 'Use Map' or 'AutoLocate' from the options list.



The Satellite Status Page Options allow you to enable the built-in simulator, change the sky view orientation or initialize the receiver.



'AutoLocate' forces the receiver to search for all satellites (twelve at a time) until enough satellites are found to determine a position.

### EPE and DOP

The Satellite Status Page also indicates the accuracy of the position fix, using Estimated Position Error (EPE) and Dilution of Precision (DOP) figures. DOP measures satellite geometry quality (i.e., number of satellites received and where they are relative to each other) on a scale from one to ten. The lowest numbers are the best accuracy and the highest numbers are the worst. EPE uses DOP and other factors to calculate a horizontal position error, in feet or meters.

### Satellite Status Page Options

Many features of the GPS III+ are menu driven. Each of the main pages has an options menu, allowing you to custom tailor the corresponding page to your preferences and/or select special features which specifically relate to that page.

**To display the Satellite Status Page Options, press MENU (with the Satellite Status Page displayed).**

The following Satellite Status Page options are available:

**Start Simulator**— allows you to activate the GPS III+'s built-in simulator mode. If 'Start Simulator' is selected, 'Stop Simulator' will appear as an option instead.

**To activate (deactivate) simulator mode:**

1. Highlight 'Start Simulator' (or 'Stop Simulator') and press ENTER.
2. Highlight 'Yes' and press ENTER.

**Track Up**— changes the sky view display from 'North Up' orientation to align to current direction of travel (track). If 'Track Up' is selected, 'North Up' will appear as an option instead.

**To change the sky view orientation:**

1. Highlight 'Track Up' (or 'North Up') and press ENTER.

**AutoLocate**— forces the GPS III+ to search for any available satellite(s) to determine its position. This option is useful if you've relocated a long distance (>500 miles) from the last location the GPS III+ was used.

**To select AutoLocate, highlight 'AutoLocate' and press ENTER.**

**Initialize Position**— allows you to designate your approximate position in order to speed up satellite acquisition. This option may be used in lieu of 'AutoLocate', above.

**To initialize your starting position:**

1. Highlight 'Initialize Position' and press ENTER.
2. Designate your approximate position on the map using the rocker keypad and press ENTER. (You may wish to use the IN/OUT zoom keys to adjust the level of detail displayed, as you determine your approximate position.)

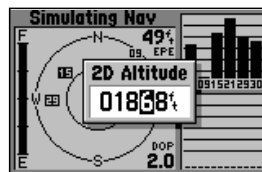
**Set 2D Altitude**— allows you to designate your approximate altitude, when the GPS III+ is acquiring satellites or navigating in 2D mode. By default, 2D navigation will attempt to use the last known altitude. If the altitude shown is off by several hundred feet (or more), manually entering your approximate altitude will enable the receiver to more accurately determine a position fix.

**To enter an altitude:**

1. Highlight 'Set 2D Altitude' and press ENTER.
2. Enter your approximate altitude using the rocker keypad, and press ENTER.

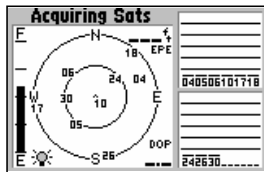


'Initialize Position' is used to designate your approximate position directly on the map display. The receiver uses this information to determine which satellites should be in view.



With 2D coverage, you will need to enter your approximate altitude. Without an approximate altitude, your position error can be substantial.

## Contrast and Backlighting



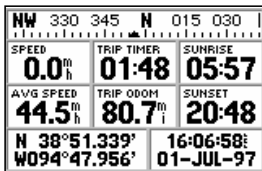
When screen backlighting is on, a bulb icon will appear in the lower-left corner of the Satellite Status Page.

## Contrast and Backlighting

On page 25, we introduced display contrast and backlighting adjustments accessible from the Satellite Status Page. Display settings can also be adjusted from any page, by pressing the red power key. When backlighting is on, a bulb icon will appear on the Satellite Status Page, to the bottom left of the sky view. To adjust the duration of the screen backlighting, refer to the operation setup section (see p. 75).

### To adjust the screen contrast and/or backlighting from any page:

1. Press the red power key momentarily. A window will appear showing the current contrast and backlighting settings.
2. Press LEFT or RIGHT on the rocker keypad to adjust the level of contrast, and press ENTER to save the new contrast setting.
3. Press UP or DOWN on the rocker keypad to adjust the level of backlighting, and press ENTER to save the new backlighting setting.



The Position Page shows you where you are, what direction you're heading and how fast you're going.

## Position Page

The second page in the GPS III+'s main page sequence is the Position Page. This page shows you where you are, what direction you're heading, and how fast you're going, and it's most useful when you are traveling without an active destination waypoint. The graphic heading display at the top of the page indicates the direction you're heading, or track, only while you're moving.

Directly below this display are the speed, average speed, trip timer, trip odometer and sunrise/sunset fields (default). The sunrise/sunset times indicated are for your present position. These times, and the current time display in the lower-right corner, can be displayed in local or UTC (universal) time. The lower left-hand corner of the page shows your current latitude and longitude in degrees and minutes (default). The GPS III+ uses this basic information to mark exact positions as waypoints, which help guide you from one place to another. Average speed, sunrise and sunset times (at

your present position) also appear on the Position Page (as default selections). Units of measure and the position readout are selectable from the Main Menu, as outlined on page 72-73. ‘Trip Computer’ functions—such as average speed, max speed, trip odometer and trip timer—can each be reset from the Main Menu, as described on page 72.

Many features of the GPS III+ are menu driven. Each of the main pages has an options menu, allowing you to custom tailor the corresponding page to your preferences and/or select special features which specifically relate to that page.

**To display the Position Page Options, press MENU (with the Position Page displayed).**

The following options are available:

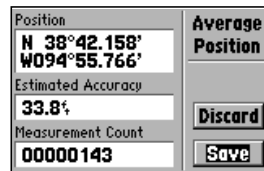
**Average Position**— allows you to average position samples over time and save the averaged result as a waypoint. Averaging reduces the effects of selective availability on position error and results in a more accurate position reading.

**To average position samples and save the result as a waypoint:**

1. Highlight ‘Average Position’ and press ENTER. The Average Position Page will appear. Observe the ‘Estimated Accuracy’ and ‘Measurement Count’ fields.
2. When the ‘Estimated Accuracy’ and/or ‘Measurement Count’ figures reach the desired value(s), highlight ‘Save’ and press ENTER. (To cancel the averaging function, highlight ‘Discard’ and press ENTER.)
3. The New Waypoint Page appears with a three-digit number assigned as a name for the new waypoint. To save the waypoint with this name, highlight ‘Done’ and press ENTER. Or,
4. To change the waypoint name, highlight the waypoint name field and press ENTER. Use the rocker keypad to enter a new name for this waypoint and press ENTER when finished. Highlight ‘Done’ and press ENTER to save the waypoint.



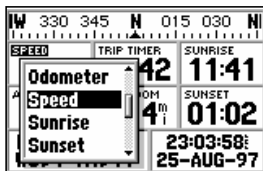
The Position Page Options allow you to average position samples and save the result as a waypoint, change data fields or restore factory defaults.



When averaging positions to create a waypoint, observe the ‘Estimated Accuracy’ and ‘Measurement Count’ figures. When they reach the desired value(s), highlight ‘Save’ and press ENTER.

# REFERENCE

## Position Page Options



'Change Fields' allows you to custom tailor the information that appears on the Position Page. Select the desired data type from the list.



'Restore Defaults' will override any data field changes you've made to the Position Page, reverting back to the factory default settings.

**Change Fields**— allows you to choose the data displayed on the six user-selectable data fields. Available data types are: Altitude, Average (Avg) Speed, Battery (Bat) Timer, Max Speed, Odometer, Speed, Sunrise (at present position), Sunset (at present position), Track, Trip Odometer, Trip Timer, User Timer and Voltage. See page 91 for descriptions of navigation terms.

### To change a data field:

1. Highlight 'Change Fields' and press ENTER.
2. Highlight the data field you wish to change (using the rocker keypad) and press ENTER.
3. Select the type of data you want to appear on this field and press ENTER.

**Restore Defaults**— resets all data fields to the factory default settings.

To restore the factory default settings, highlight 'Restore Defaults' and press ENTER.



The GPS III+ features a powerful real-time moving map that can do much more than just plot your course and route. The Map Page also displays background detail, including geographic names, lakes, rivers, coastlines and highways. An on-screen cursor lets you pan ahead to nearby waypoints, determine the distance and bearing to any map position, mark new waypoints while you navigate or retrieve exit information. The GPS III+ also features dedicated zoom keys for instant zooming (see p. 2). The map portion of the page displays your present position as a pointer icon, with your track and/or route displayed as small points on the screen (an electronic bread crumb trail, if you will). Nearby waypoints are represented with names and symbols. You may select which features are shown via the Map Page Options (see pg. 37).

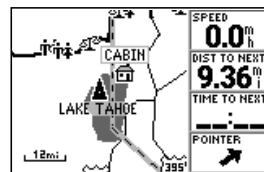
The data window beside (or above when display is vertical) the map displays the time and distance to next waypoint, plus your current speed (all defaults). A bearing pointer lets you know if you're heading toward your destination. (If the pointer points straight ahead, you're heading directly to it.) Each data field may be configured to display any one of twenty-four data options.

### Zooming and Panning

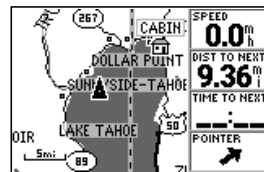
There are three main functions you can perform from the Map Page: zooming, panning, and pointing. The map has 24 map scales (from 120 feet to 500 miles, or 30 meters to 800 km) which are selected by pressing the IN and OUT zoom keys. The current map scale is indicated in the bottom left corner of the map display.

#### **To change the map scale:**

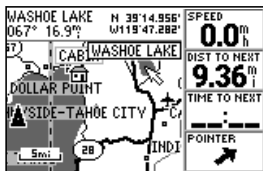
1. Press zoom IN to see a smaller area with more detail.
2. Press zoom OUT to see a larger area with less detail.



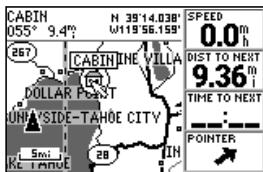
The Map Page displays a digital map, including lakes, rivers, highways, highway exits and towns.



Zoom IN to see more detail for a smaller area. Zoom OUT to see a larger area.



Use the rocker keypad to pan away from your present position. Place the arrow on a waypoint and press ENTER to see more information.



By placing the panning arrow over an on-screen waypoint and pressing GOTO, you won't have to manually select your destination from the GOTO Page.

Another function on the Map Page is the pan function, which allows you to move the map with the keypad in order to view areas beyond the current map.

### To activate the pan function:

1. Use the rocker keypad to move the map in any direction, including diagonally.

As you begin to pan on the map, an arrow appears. This arrow will serve as a target marker for the map. When the arrow is placed on an object, the name of that object will be highlighted. (If the name wasn't originally displayed it will appear when the arrow is placed on the object.) This feature applies to waypoints, roads, lakes, rivers—pretty much everything displayed except route lines and track log data.

When a waypoint name is highlighted, you can review information about the waypoint, list waypoint options, or execute a GOTO right from the Map Page.

### To select an on-screen waypoint with the panning arrow:

1. Use the rocker keypad to highlight the desired waypoint.
2. Press ENTER to review information for the selected waypoint.
3. To exit the information page, press QUIT.

### To GOTO a highlighted waypoint:

1. With the waypoint highlighted, press GOTO, followed by ENTER.

The GOTO function can be used anywhere on the map. If a waypoint or highway exit is not highlighted, a new waypoint (called 'MAP') will be created at the arrow location before the GOTO is initiated.

### To cancel the pan function and re-center the map on your position:

1. Press the QUIT key.

Highway exit information is also available when using the pan function. Simply place the panning pointer over the exit location to retrieve additional information—including available services—about the exit. Exit information is generally limited to interstate highways and is categorized into two types:

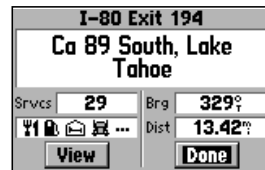
**Common Exits**— traditional ramp, cloverleaf or intersection exits.

**Special Exits**— rest areas, service areas, toll booths, welcome centers and weigh stations.

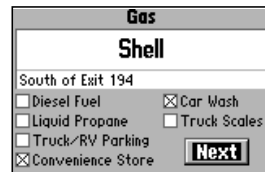
Common exits are depicted with an open square icon when services are available and a filled-gray square icon when no services are available.

### To display available services for an exit shown on the map page:

1. Use the rocker keypad to place the panning arrow on the desired exit. A window will appear showing the exit number, along with icons depicting the available services.
2. Press ENTER to display the Exit Info Page for the selected exit. The Exit Info Page shows the number of available services, and the bearing and distance to the exit location.
3. Highlight the “View” button at the bottom of the page and press ENTER to display the Services Near Exit List. The Services Near Exit List shows a service icon and the name for each available service.
4. Highlight the desired service and press ENTER to display an Exit Service Detail Page. This page provides a checklist of available services—such as fuels, parking, convenience stores, etc.
5. Press QUIT, as often as needed, to back out of each exit services page. If you continue to press QUIT, you will return to the Map Page.



For a selected highway exit, the Exit Info Page displays the number of available services and icons depicting the type of available services.



The Exit Services Detail Page provides a checklist of available services. Start from the Services Near Exit List and select the desired service to display this page.

# REFERENCE

## Map Page: Exits



Options window for the Exit Info Page. “Save As Waypnt” allows you to create a waypoint at a highway exit location.



Options window for the Services Near Exit List. “Services Setup” allows you to designate which service types you’d like to have displayed on the exit services pages.

Many features of the GPS III+ are menu driven. Options menus are available from the exit services pages, allowing you to select special features which specifically relate to that page. These include options to save highway exit locations as waypoints and a setup feature to exclude those services you don’t wish to view.

**Show Map**— allows you to return to the map, centered on the selected exit. While viewing the map display, you can also use the IN and OUT zoom keys to see additional detail.

### To view the map area around an exit on the Exit Info Page:

1. Select ‘Show Map’ (from the Exit Info Page Options) and press ENTER.

**Save As Waypnt**— creates a waypoint at the exit location and saves it in memory. If the exit name is longer than six characters, it will be abbreviated when creating the waypoint.

### To save an exit location as a waypoint:

1. Select ‘Save As Waypnt’ (from the Exit Info Page Options) and press ENTER.
2. With ‘Done’ highlighted, press ENTER to save the new waypoint.

**Services Setup**— allows you to designate which service types you wish to display on the exit services pages. Those service types which you disable will not be included in the number of available services (on the Exit Info Page) or in the Services Near Exit List.

### To designate the service types you want to appear on the exit services pages:

1. Select ‘Services Setup’ (from the Services Near Exit List Options) and press ENTER.
2. Use the rocker keypad to select the desired service type and press ENTER to toggle between enabled (denoted by an “X”) or disabled.

**Restore Defaults**— resets all options to the factory default settings.

**To restore the factory default settings, highlight ‘Restore Defaults’ (from any exit services page option window) and press ENTER.**

Many GPS III+ features are menu driven. Each of the main pages has an options menu, allowing you to custom tailor the corresponding page to your preferences and/or select special features which specifically relate to that page.

**To display the Map Page Options, press MENU (with the Map Page displayed).**

The following options are available:

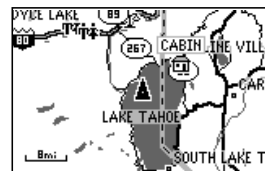
**Data Fields Off**— allows you to select between a full-screen map display or the default map display with data window. If the data fields are off, 'Data Fields On' will appear as an option instead.

**To turn the data fields off (or on), highlight 'Data Fields Off' (or 'Data Fields On') and press ENTER.**

**Change Fields**— allows you to choose the data displayed on four user-selectable data fields. There are twenty-four available data types, including Average (AVG) Speed, Bearing, Distance, ETA to Destination (DEST), Speed, Time to Destination (DEST), Track and a Trip Odometer. See page 91 for descriptions of navigation terms.

**To change a data field:**

1. Highlight 'Change Fields' and press ENTER.
2. Highlight the data field you wish to change and press ENTER.
3. Select the type of data you want to appear on this field and press ENTER.



A full-screen map, without the data fields, is available by selecting the 'Data Fields Off' option.



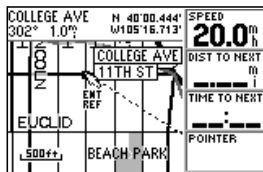
The 'Change Fields' option allows you to select the desired data you wish to display in the four user-selectable fields (along the right-hand side of the map page).

# REFERENCE

## Map Page Options

<b>Map-Source Info</b>	KBytes Used	1328 of 1440
	Maps Loaded	6 of 25
	US Road & Rec - Continental US Arapahoe Co, Colorado	
<input checked="" type="checkbox"/>	US Road & Rec - Continental US Jefferson Co, Colorado	
<input checked="" type="checkbox"/>	US Road & Rec - Continental US Boulder Co, Colorado	

The *MapSource Info* page lists any detailed maps that have been downloaded from the optional *MapSource* software package.



When using the 'Measure Dist' option, the arrow includes an 'Enter Reference' prompt and the arrow position appears at the top of the map display.

**MapSource Info**— shows the number of maps downloaded from the optional *MapSource* software package and the amount of memory used (in kilobytes). *MapSource* allows you to supplement the built-in map with additional detail, including residential streets. Each downloaded map is described by name, and may be deselected if you wish to retain the map in memory, but not display the data on the Map Page. (When a *MapSource* file is selected, the boundary for any downloaded map is shown on the Map Page as a gray shaded outline.)

### To display the MapSource Info Page:

1. Highlight 'MapSource Info' and press ENTER.
2. Use the rocker keypad to scroll through the list of downloaded maps.
3. To select/deselect a map, highlight the box to the immediate left of the desired map. Press ENTER to select/deselect the map. The map is selected and will be displayed on the Map Page when an "X" appears in the box adjacent to that map.

**Measure Dist**— allows you to measure the bearing and distance between any two points on the map display.

### To measure bearing and distance between two points:

1. Highlight 'Measure Dist' and press ENTER. An on-screen pointer will appear on the map display at your present position.
2. Move the cursor to the desired reference point (the point you want to measure from) and press ENTER.
3. Move the cursor to the point you want to measure to. The bearing and distance from the reference point will be displayed at the top of the page.

**Restore Defaults**— resets all data fields to the factory default settings.

To restore the factory default settings, highlight 'Restore Defaults' and press ENTER.

**Map Setup**—allows you to configure the map display to your preferences, including map detail, map orientation, automatic zoom, lat/lon grid, track and route lines, exits and waypoint names. The map setup option uses a ‘file tab’ feature, making it easier to organize the various settings and easier for you to use. The following table lists the file tabs and the settings available under each tab:

Map	Detail, Orientation, AutoZoom, Accuracy Circle
Source	Built-in Base Map, MapSource Files
Line	Track Log, Active Route Lines, Roads/Road Labels
Pnts	All Waypoints and Text, Active Route Wpts, Exits
City	Large/Medium/Small Cities, Small Towns, Text
Other	Rivers/Lakes, Lat/Lon Grid, Metro Areas, Railroads

**NOTE:** Large cities are those with approximate populations greater than 200,000. Medium cities are those with approximate populations over 50,000 and small cities are greater than 5,000. Small towns have approximate populations under 5,000 or an unknown population size.

### To change a map setup feature:

1. Highlight ‘Map Setup’ and press ENTER.
2. To set the desired map detail, select the ‘Map’ tab (if not already selected). Scroll down (using the rocker keypad) to highlight the ‘Detail’ field and press ENTER. Select the desired detail level—More, Normal, Less, Least—and press ENTER.

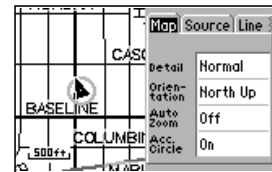


**NOTE:** The ‘Detail’ setting applies to any map feature set to “Auto”. Those features for which you have specified a maximum scale, or turned “Off”, are unaffected by the detail setting.

{continued}



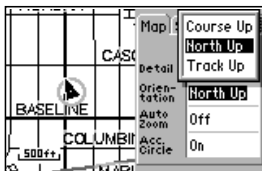
‘Map Setup’ allows you to change map orientation, background map detail, text size, etc.



The map settings are organized by a series of ‘file tabs’. Use the rocker keypad to select the desired tab, and to select the desired setting(s).

# REFERENCE

## Map Page Options



Select the 'North Up' option to keep the top of the map display fixed on North. 'Track Up' will cause the map to rotate so the top of the map is the direction you're heading.



The 'Zoom' setting allows you to define the maximum scale at which the feature will appear. Select "Auto" to control the feature using the 'Detail' setting. See page 39.

- To change map orientation, select the 'Map' tab (if not already selected). Scroll down to highlight the 'Orientation' field and press ENTER. Select 'North Up' to fix the top of the map display to a north heading. Select 'Track Up' to adjust the top of the map display to your current track heading. Select 'Course Up' to fix the top of the map display to your desired course. Press ENTER to accept the selected option.
- To enable/disable automatic zoom, select the 'Map' tab (if not already selected). Scroll down to highlight the 'Auto Zoom' field and press ENTER. Select 'On' or 'Off' to enable or disable automatic zoom. Press ENTER to accept the selected option. The automatic zoom feature will automatically adjust the map scale from 80 miles through each lower scale, stopping at 800 ft as you approach your destination waypoint.
- To enable/disable the accuracy circle, select the 'Map' tab (if not already selected). Scroll down to highlight the 'Acc. Circle' field and press ENTER. Select 'On' or 'Off' to enable or disable the accuracy circle. Press ENTER to accept selected option. With the accuracy circle on, a gray circle will appear around your position (at lower scale settings) depicting the estimated accuracy of your position reading.
- To enable/disable the built-in base map or MapSource files, select the 'Source' tab. Scroll down to highlight 'Basemap' or 'MapSource' and press ENTER. Select 'On' or 'Off' to enable or disable the selected map data and press ENTER.
- For all waypoints, active route waypoints, rivers/lakes and cities: select the appropriate tab (per the chart on page 39). Scroll down to highlight the zoom field for the desired feature and press ENTER. Select the maximum scale at which the feature should appear on screen, or 'Off' to never display, and press ENTER. Highlight the text field for the desired feature and press ENTER. Select the text size for the desired feature, or 'None' to disable text, and press ENTER.
- For track log data, active route lines, local roads, street labels, highway exits, lat/lon grid, metro areas, and railroad lines: select the appropriate tab (per the chart on page 39). Scroll down to highlight the zoom field for the desired feature and press ENTER. Select the maximum scale at which the feature should appear on screen, or select 'Off' to never display the feature. Press ENTER to accept the settings.



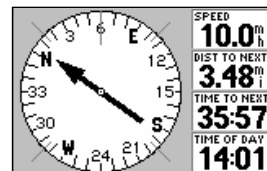
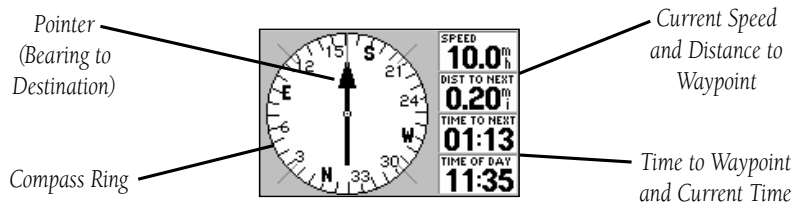
# REFERENCE

## Compass Page

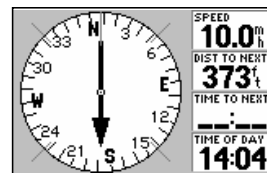
Whenever a destination waypoint(s) has been selected, the GPS III+’s Compass Page will guide you to your destination with digital readouts and a graphic compass display, which includes a bearing pointer. Use this page (instead of the Highway Page) when travelling at slower speeds, when making frequent directional changes, or where straight line navigation is not possible due to obstructions or terrain.

The middle of the page features a rotating ‘compass ring’ that shows your course over ground (track) while you’re moving. (Your present course over ground is indicated at the top of the compass ring.) A bearing pointer, in the middle of the compass ring, indicates the direction of the destination (bearing) relative to the course over ground. The compass ring and pointer arrow work independently to show—at a glance—the direction of your movement and the direction to your destination. For instance, if the arrow points up, you are going directly to the waypoint. If the arrow points any direction other than up, turn toward the arrow until it points up—then continue in that direction.

Along the right side of the page (top, when display is vertical) are four user-selectable data fields that display current speed, distance and time to next waypoint, and current time (defaults). Each data field may be configured to display any one of twenty-five data options.

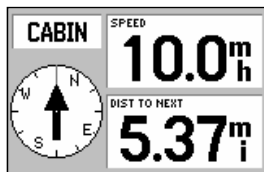


The bearing pointer indicates the direction (bearing) to your destination. If the arrow points any direction other than up, turn toward the arrow until it points up.

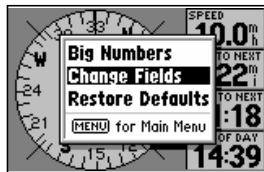


If you pass your destination waypoint, the bearing pointer will swing around 180° and the ‘Dist to Next’ waypoint will increase.

## Compass Page Options



'Big Numbers' provides a smaller compass display, a large bearing pointer, and two user-selectable, large character data fields.



The 'Change Fields' option allows you to select from a list of available data types. Four different items may be displayed on the Compass Page—two when using the 'Big Numbers' option.

Many features of the GPS III+ are menu driven. Each of the main pages has an options menu, allowing you to custom tailor the corresponding page to your preferences and/or select special features which specifically relate to that page.

**To display the Compass Page Options, press MENU (with the Compass Page displayed).**

The following options are available:

**Big Numbers**— allows you to select a different Compass Page layout, with a smaller compass display and two user-selectable, large-character data fields. If 'Big Numbers' is selected, 'Big Compass' will appear as an option instead.

**To toggle between Compass Page formats, highlight 'Big Numbers' (or 'Big Compass') and press ENTER.**

**Change Fields**— allows you to choose the data displayed on four user-selectable data fields (two fields for the 'Big Numbers' option). There are twenty-five available data types, including Average (AVG) Speed, Bearing, Distance (DIST) to Destination, ETA to Destination (DEST), Speed, Time to Destination (DEST), Track, and a Trip Odometer. See page 91 for descriptions of data terms.

**To change a data field:**

1. Highlight 'Change Fields' and press ENTER.
2. Highlight the data field you wish to change and press ENTER.
3. Select the type of data you want to appear on this field and press ENTER.

**Restore Defaults**— resets all data fields to the factory default settings.

**To restore the factory default settings, highlight 'Restore Defaults' and press ENTER.**

## REFERENCE

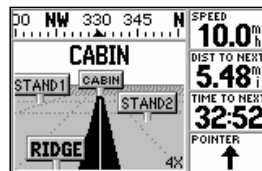
### Highway Page

The GPS III+'s Highway Page also provides graphic steering guidance to your destination, by using a graphic highway display. Along the right side of the page (top, when display is vertical) are four user-selectable data fields that display current speed, distance and time to next waypoint, and a bearing pointer (defaults). The bearing pointer always points to the destination waypoint (or the next waypoint when using a route) relative to the direction you are moving (track). If the bearing pointer points straight ahead, you are heading directly to your destination. If the bearing pointer points any direction other than up, turn toward the arrow until it points up—then continue in that direction. Each data field may be configured to display any one of twenty-three data options.

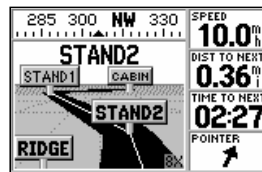
The graphic heading compass at the top of the page indicates the direction you are moving (track). Directly below the heading compass, the highway display provides visual guidance to the destination waypoint and keeps you on your intended course line. Your course is represented by the center line down the middle of the graphic highway. As you head toward your destination, the highway perspective will move to indicate your progress to the waypoint and which direction you should steer to stay on course. If you are navigating a route, the highway display will show each route waypoint in sequence, with the route course indicated by a black highway. Nearby waypoints not in the route will also be displayed. You can zoom in or out on the highway display for a smaller or larger view. Five available settings range from 1X to 16X, with a default setting of 8X.

#### To zoom in or out on the highway display:

1. Press the IN zoom key to increase the zoom level and show a smaller view area.
2. Press the OUT zoom key to decrease the zoom level and show a larger view area.



*Your course is represented by the highway center line. Keep the center line in the middle of the display to stay on course.*



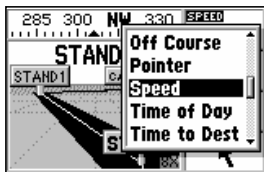
*When using a route, the Highway Page will guide you to each waypoint along the route.*

# REFERENCE

## Highway Page Options



The 'Sign Posts Off' option allows you to remove the waypoint markers from the highway display.



The 'Change Fields' option allows you to choose the type of data to display on four user-selectable data fields. Select the desired type from the 'Change Fields' list.

Many features of the GPS III+ are menu driven. Each of the main pages has an options menu, allowing you to custom tailor the corresponding page to your preferences and/or select special features which specifically relate to that page.

**To display the Highway Page Options, press MENU (with the Highway Page displayed).**

The following options are available:

**Sign Posts Off**— removes the waypoint markers from the highway display. If 'Sign Posts Off' is selected, 'Sign Posts On' will appear as an option instead.

**To remove (or display) waypoint markers on the highway, highlight 'Sign Posts Off' (or 'Sign Posts On') and press ENTER.**

**Change Fields**— allows you to choose the data displayed on four user-selectable data fields. There are twenty-three available data types, including Average (AVG) Speed, Bearing, Distance (DIST) to Destination, ETA to Destination (DEST), Speed, Time to Destination (DEST), Track, a Trip Odometer and a bearing Pointer. See page 91 for data type descriptions.

**To change a data field:**

1. Highlight 'Change Fields' and press ENTER.
2. Highlight the data field you wish to change and press ENTER.
3. Select the type of data you want to appear on this field and press ENTER.

**Restore Defaults**— resets all data fields to the factory default settings.

**To restore the factory default settings, highlight 'Restore Defaults' and press ENTER.**

The GPS III+ stores up to 500 waypoints, with a selectable symbol and comment available for each waypoint. Waypoints can be created using five methods:

**Mark Present Position**— your present position can be captured and saved as a waypoint using the ENTER/MARK key.

**On Map**— a new waypoint position can be created directly on the map display using the panning arrow.

**Text Entry**— waypoints can be created by entering position coordinates manually (from a chart, etc.) or by referencing bearing and distance from a previously stored waypoint (or present position).

**Average Position**— position samples can be averaged over time and the result saved as a waypoint. Averaging reduces the effects of selective availability and improves the accuracy of the position reading. (See page 31 for more info.)

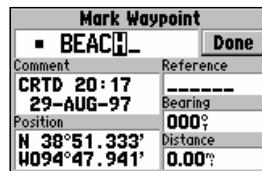
**Nearest Locations**— nearest cities or highway exits can be saved as waypoints from the nearest locations pages. (See page 51 for more info.)

### Marking Present Position

The GPS III+'s mark feature lets you quickly capture your present position in order to create a new waypoint. You must be locked onto satellites, with a valid position fix, to mark your present position.

#### To mark your present position:

1. Press and hold the ENTER/MARK key. The Mark Waypoint Page is automatically displayed.
2. To change the waypoint name (a three-digit number is automatically assigned), highlight the waypoint name field and press ENTER. Use the rocker keypad to enter the new waypoint name and press ENTER when finished.
3. To save the waypoint in memory, highlight 'Done' and press ENTER.



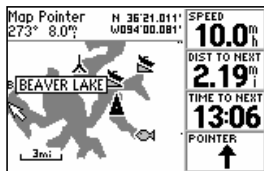
The ENTER/MARK key allows you to mark your current position as a waypoint. You can give this waypoint any name you choose—up to six characters long.



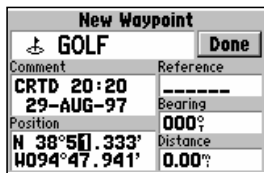
You can also choose from a list of symbols used to identify the user waypoint on the map display.

# REFERENCE

## Creating Waypoints



Waypoints can be created directly from the Map Page, by placing the panning arrow on the desired position and pressing ENTER.



User waypoints can also be created by entering the position coordinates for the waypoint.

## Marking Waypoints on the Map Page

Waypoints can also be quickly created from the Map Page, which allows you to “point and shoot” at any map position to create a new waypoint.

### To create a new waypoint on the map:

1. Press the PAGE key repeatedly to select the Map Page.
2. Use the rocker keypad to move the arrow to the desired map position. You may also need to use the IN and OUT zoom keys, in conjunction with the rocker keypad, to speed up this process.
3. Press ENTER to capture the arrow position and display the New Waypoint Page. (If the arrow is placed on a highway exit, the exit services pages will appear instead. To create a waypoint at a highway exit location, see pages 35-36.)
4. To change the waypoint name (a three-digit number is automatically assigned), highlight the waypoint name field and press ENTER. Use the rocker keypad to enter the new waypoint name and press ENTER when finished.
5. To save the waypoint in memory, highlight 'Done' and press ENTER.

## Creating Waypoints by Text Entry

Waypoints may be created by manually entering the position coordinates or by entering the bearing and distance from an existing waypoint (or present position).

### To create a new waypoint by manually entering its coordinates, or by bearing/distance from another position:

1. Press the MENU key twice to select the Main Menu.
2. Highlight 'Waypoints' and press ENTER. A list of all waypoints stored in memory is displayed.
3. Press MENU to display the Waypoint List Options.

- Highlight 'New Waypoint' and press ENTER. The New Waypoint Page appears.
- To enter a name for the new waypoint, highlight the waypoint name field and press ENTER. Use the rocker keypad to enter the waypoint name and press ENTER when finished.
- To enter position coordinates for the new waypoint, highlight the waypoint coordinates field and press ENTER. Use the rocker keypad to enter the position coordinates and press ENTER when finished. (For lat/long coordinates, enter both the latitude and longitude information before pressing ENTER.) **OR**,
- To create the new waypoint by referencing another position, highlight the reference waypoint name field and press ENTER. Use the rocker keypad to enter the name of the reference waypoint and press ENTER. (If the reference waypoint name field is left blank, your present position will be used as the reference position.) Use the same procedure to enter the bearing (BRG) and distance (DIST) from the reference waypoint to the new waypoint. (Remember to press ENTER once each data item is selected with the rocker keypad.)
- To save the new waypoint in memory, highlight 'Done' and press ENTER.

### Waypoint List Options

The Waypoint List Options were displayed using the first three steps, above. In addition to 'New Waypoint', there are five additional options:

**Show Map**— allows you to view the map area around the highlighted waypoint on the Waypoint List. While viewing the map display, you can also use the IN and OUT zoom keys to see additional detail.

#### **To view the map area around a highlighted waypoint on the Waypoint List:**

- Select 'Show Map' (from the Waypoint List Options) and press ENTER.



*You can choose from a list of symbols used to identify the waypoint on the map display.*



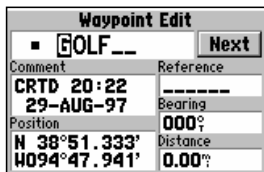
*The Spell 'n Find option allows you to retrieve waypoint information by manually entering the waypoint's name with the rocker keypad.*

# REFERENCE

## Editing Waypoints



Waypoints can be deleted individually, by common symbol or all at once. Select the desired 'Delete' option and press ENTER.



To rename a waypoint, enter the new name directly over the old name and press ENTER.

**Spell 'n Find**— allows you to display the Waypoint Edit Page for any waypoint in memory, by typing in the first few characters of the waypoint's name.

### To Spell 'n Find a waypoint:

1. Select the Spell 'n Find option and use the rocker keypad to enter the first few characters of the waypoint name.
2. Press ENTER to view waypoints starting with characters entered.

**Delete Waypoint**— allows you to delete the waypoint which is highlighted on the Waypoint List.

**Delete by Symbol**— allows you to select a waypoint symbol and all waypoints with this corresponding symbol will be deleted from memory.

**Delete All**— deletes all waypoints currently stored in memory.

### To delete a waypoint (or waypoints):

1. Select the desired delete option from the list above and press ENTER. The GPS III+ will delete all waypoints not used in a route, then prompt you to continue before deleting any route waypoints.
2. If 'Delete by Symbol' is selected, select the desired symbol and press ENTER.

## Editing Waypoints

Once you have created and stored a waypoint, it may be modified, reviewed, renamed or deleted at any time through the Waypoint Edit Page. The Waypoint Edit Page for any stored waypoint can be retrieved by highlighting the desired waypoint on the map display, or selecting it from any waypoint list, and pressing the ENTER key.

### To access the Waypoint Edit Page:

1. Use the rocker keypad to highlight the desired waypoint on the map display or on any waypoint list.
2. Press ENTER to display the Waypoint Edit Page for the selected waypoint.



From the Waypoint Edit Page, highlight the appropriate field to rename a waypoint, change its symbol, edit the comment or edit the position.

### To rename the waypoint:

1. Highlight the waypoint name field and press ENTER.
2. Use the rocker keypad to enter the new waypoint name and press ENTER.
3. If finished, highlight 'Done' and press ENTER.

### To change the waypoint's symbol:

1. Highlight the waypoint symbol field and press ENTER.
2. Use the rocker keypad to select the desired symbol and press ENTER. The selected symbol will be used to denote the waypoint position on the map display.
3. If finished, highlight 'Done' and press ENTER.

When a waypoint is created, the time and date of creation is automatically added as a waypoint comment. You can edit this information or create a entirely new comment, as needed.

### To edit the waypoint comment:

1. Highlight the waypoint comment field and press ENTER.
2. Use the rocker keypad to enter the desired comment and press ENTER.
3. If finished, highlight 'Done' and press ENTER.

### To edit the waypoint position:

1. Highlight the waypoint coordinates field to change the position coordinates, or highlight the reference waypoint name, bearing or distance fields to change the reference waypoint information. Press ENTER to begin editing.
2. Use the rocker keypad to enter the new information. Press ENTER to accept the new information.
3. When finished, highlight 'Done' and press ENTER.

Waypoint Edit	
■ GOLF	Done
Comment	Reference
BELLA VIST	-----
A	Bearing
Position	000°
N 38°51.333'	Distance
W094°47.941'	0.00°

The default waypoint comment is the time and date the waypoint was created. You can enter your own comment using the rocker keypad.

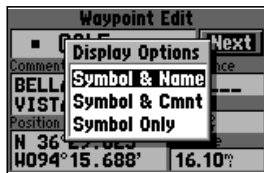
Waypoint Edit	
■ GOLF	Next
Comment	Reference
BELLA VISTA	-----
A	Bearing
Position	312°
N 36°29.023'	Distance
W094°17.941'	16.10°

Edit a waypoint's position by entering the new position coordinates directly over the old position.

## Waypoint Edit Options



'Show Map' allows you to view the area around the waypoint's position.



'Display Options' lets you determine what waypoint information will appear on the map display.

The Waypoint Edit Page also features an options page that allows you to delete the waypoint, view the map area around the waypoint position, define how the waypoint will appear on the map display or average the waypoint position to improve accuracy.

**To display the Waypoint Edit Options, press MENU (with the Waypoint Edit Page displayed).**

The following options are available:

**Show Map**— allows you to view the map area surrounding the selected waypoint's position. While viewing the map display, you can also use the IN and OUT zoom keys to see additional detail.

**Display Options**— lets you designate how the selected waypoint will appear on the map display. Options are provided to show Symbol & Name, Symbol & Comment (Cmnt), or Symbol Only.

**To change the display options for a waypoint:**

1. Highlight 'Display Options' and press ENTER.
2. Highlight the desired option and press ENTER.

**Average Position**— allows you to average position samples over time to update the waypoint's position with a more accurate position reading. (See page 31 for more information on averaging.)

**Delete Waypoint**— allows you to remove the selected waypoint from memory.

**To delete a waypoint:**

1. Highlight 'Delete Waypoint' and press ENTER. A confirmation screen is displayed.
2. ENTER to delete (or QUIT to cancel).

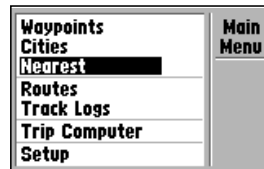
Another waypoint feature of the GPS III+ is the nearest locations pages, which show up to nine nearest waypoints and 50 nearest cities—within 200 miles of your present position—along with 50 exits on the nearest (interstate) highway. The nearest locations pages are organized by a series of ‘file tabs’ (denoting categories for Waypoints, Cities and Exits) and display the bearing (BRG) and distance (DST) to each nearby location for the selected tab (category). The lists are continuously updated as you’re moving and provide quick access to the closest points of safety in an emergency.

### To view the nearest locations pages:

1. Press the MENU key twice to display the Main Menu.
2. Highlight ‘Nearest’ and press ENTER.
3. Highlight the appropriate tab (Waypoints, Cities or Exits) for the desired nearest list.
4. Scroll through the list using the UP/DOWN portion of the rocker keypad.

### To view additional information for a nearby location:

1. Scroll through the selected nearest list (as described above) and highlight the desired location (Waypoint, City or Exit).
2. Press ENTER to display an info page for the selected location.
3. For waypoints, the information is displayed on the Waypoint Edit Page. You can edit the waypoint’s location, name, symbol, etc. from this page, as outlined on pages 48-49.
4. For cities, the information includes state, country, size or reference, and position. You can show the map area for the city, save it as a waypoint or switch between size and reference information as described on pages 67-69.
5. For exits, all the exit services pages and related options menus (described on pages 35-36) are available.



To view the nearest locations pages, select ‘Nearest’ from the Main Menu.

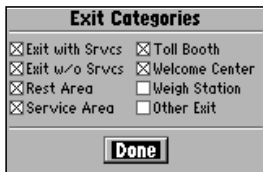
Waypoints	Cities	Exits
Waypoint	Bearing	Distance
FISH	024°	2.8°
HTWHIT	077°	8.4°
RAMP	078°	12°
MARINA	080°	13°
GOLF	311°	16°

The nearest locations pages are organized as a series of “file tabs”. Select the appropriate tab to show as many as nine nearby waypoints, 50 nearest cities or 50 nearest highway exits—along with the bearing and distance to each.

## Nearest Location Options



The Nearest Location Options allows you to define the category of exits which will appear on the Nearest Exits List. Start by highlighting the 'Exits' tab, then press MENU.



Select the exit categories you wish to appear on the Nearest Exits List. A category is enabled when an "X" appears in the box adjacent to the desired category.

### To GOTO a nearby location:

1. Highlight the desired location on the selected nearest list. Press GOTO to display the GOTO Page with the desired location selected.
2. Press ENTER to confirm the selected waypoint and begin navigating.

### Nearest Location Options

The nearest locations pages also feature an options page—for the 'Exits' list—that allows you to define the category of exits you want to appear on the Nearest Exits List or restore the factory default settings after you've made any changes.

#### To display the nearest location options for Exits:

1. From the nearest locations pages, highlight the 'Exits' tab and press MENU.
2. Highlight the desired option and press ENTER.

The following options are available:

**Exits Setup**— allows you to define the exit categories you wish to display on the Nearest Exits List. The categories include exits with or without services, rest areas, service areas, toll booths and welcome centers.

#### To select the desired exit categories:

1. Highlight 'Exits Setup' and press ENTER.
2. Highlight the field adjacent to the desired category and press ENTER to enable/disable the category. A category is selected, and will appear on the Nearest Exits List, when an "X" appears in the field adjacent to that category.

**Restore Defaults**— resets all exit settings to the factory defaults. In this instance, it enables all exit categories.

The GPS III+ can navigate to a destination using any of four different methods:

**GOTO**— lets you select a waypoint as your destination and quickly plot a direct course from present position to that waypoint.

**MOB (man overboard)**— captures your present position, saves it as a waypoint and sets a course back to the position for quick response in an emergency.

**TracBack**— allows you to retrace your path using the track log automatically stored in the receiver's memory. This eliminates the need to store waypoints along the way. (See page 56 for more information about TracBack.)

**Routes**— allows you to manually create a sequence of intermediate waypoints which lead you to your final destination. The GPS III+ will store up to 20 reversible routes, with up to 30 waypoints in each route.

## GOTO Navigation

The easiest way to select your destination is by using the GOTO key. The GOTO key can be used by itself, after highlighting a waypoint name on a list, or after designating a position on the map display.

### To GOTO a waypoint:

1. Press GOTO. The GOTO Page shows a series of file tabs for 'Recent' waypoints, 'All' waypoints, 'Nearest' waypoints or 'Spell n Find'.
2. To GOTO a recently used waypoint or a nearby waypoint, select the 'Recent' tab or the 'Nearest' tab, highlight the desired waypoint on the list and press ENTER.
3. To GOTO any waypoint stored in memory, select the 'All' tab, highlight the desired waypoint and press ENTER.
4. To enter the name of the destination waypoint, highlight the waypoint name field and press ENTER. (The 'Spell n Find' tab is automatically selected.) Use the rocker keypad to enter the name of the desired waypoint—UP/DOWN to change each character and RIGHT to move to the next character. Press ENTER to confirm the selection.



To GOTO a waypoint, press GOTO and select the desired tab. Highlight the waypoint name field at the top of the page to spell the name of the desired destination waypoint.



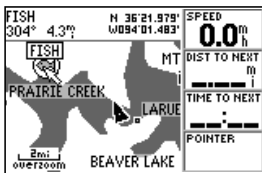
Press ENTER and use the rocker keypad to enter the identifier of the destination waypoint. Press ENTER again to confirm the waypoint and begin navigation.

# REFERENCE

## GOTO / GOTO Options

Waypoints	Cities	Exits
Waypoint	Bearing	Distance
MTWHIT	062°	3.9 <sup>m</sup>
<b>FISH</b>	304°	4.3 <sup>m</sup>
RAMP	072°	6.9 <sup>m</sup>
MARINA	074°	7.9 <sup>m</sup>
GOLF	302°	20 <sup>m</sup>

By highlighting a waypoint name on a list and pressing GOTO, you won't have to manually enter the name of your destination waypoint.



A GOTO can also be initiated from the map display by placing the panning arrow on the desired target waypoint, city or highway exit.

### To designate a GOTO waypoint from a list of waypoints:

1. Highlight the desired waypoint on the list and press GOTO. A confirmation page shows the selected destination waypoint.
2. Press ENTER to confirm the selected waypoint and begin navigating.

### To GOTO an existing waypoint, city or highway exit on the map display:

1. Use the rocker keypad to place the arrow on the desired target location. If a city or exit is selected, a waypoint will be created at that location using the city or exit name.
2. Press GOTO, followed by ENTER, to begin navigating.

### To GOTO any position on the map display:

1. Use the rocker keypad to place the arrow on any position you wish to navigate to.
2. Press GOTO to create a waypoint, called 'MAP', at the arrow position. Each time you perform this step it will overwrite any previously created 'MAP' waypoint.
3. Press ENTER to begin navigating.

## GOTO Options

GOTO Options are also provided to initiate a TracBack route or cancel the current GOTO destination.

### To display the GOTO Options, press MENU (immediately after pressing GOTO).

The following options are available:

**TracBack**— allows you to retrace your path using the track log automatically stored in the receiver's memory. This eliminates the need to store waypoints along the way. (See page 56 for more information about TracBack.)

**Cancel GOTO**— cancels the current GOTO destination and resumes navigation of any previously selected route. If no route is currently in use; bearing, distance, etc. will remain blank until a destination waypoint is defined.

**To cancel the current GOTO destination, highlight 'Cancel GOTO' and press ENTER.**

### **MOB (man overboard)**

The GPS III+'s MOB function lets you simultaneously mark and set a course to a position for quick response in an emergency. Once an MOB has been activated, an MOB symbol will appear on the map display and the navigation screens will guide you back to the 'MOB' waypoint.

#### **To activate the MOB function:**

1. Press and hold GOTO to capture the MOB position.
2. Press ENTER to begin navigating back to the 'MOB' waypoint.
3. To cancel the MOB function, select 'Cancel GOTO' from the GOTO Options and press ENTER.



**NOTE:** Each time an MOB is activated, any previous 'MOB' position stored in memory will be overwritten and permanently lost. If you wish to save an 'MOB' waypoint for future use, you should give the waypoint a new name using the steps outlined on pages 48-49.



*To cancel a current GOTO destination, select 'Cancel GOTO' from the GOTO Options.*



*Press and hold the GOTO key to activate the MOB (man overboard) feature.*

## TracBack



Clear any old data from the active track log before you depart. This defines the starting point for a TracBack route.



A TracBack route can also be created from the GOTO Options by pressing GOTO, followed by MENU and selecting 'TracBack'.

The TracBack navigation feature allows you to retrace your path using the track log automatically stored in the receiver's memory. This eliminates the need to manually store waypoints along the way. A track log is an electronic breadcrumb trail, showing the path you have travelled. Your GPS III+ can be set to automatically record track log points any time the receiver is on and locked onto satellites (see page 71).

TracBack routes are created by reducing your track log into a route of up to 30 waypoints and activating the new route in reverse order along those waypoints. Once activated, a TracBack route will lead you back to the oldest track log point stored in memory, so it's a good idea to clear the active track log at the beginning of your current trip (e.g., at the dock or trailhead), before you get started.

### To clear the active track log and define a starting point for a TracBack:

1. Press MENU twice to display the Main Menu.
2. Highlight 'Track Logs' and press ENTER.
3. With the 'Active Log' highlighted press MENU to display the options list.
4. Highlight 'Clear Active Log' and press ENTER.
5. Press ENTER to delete the track log data. (Or press QUIT to cancel.)

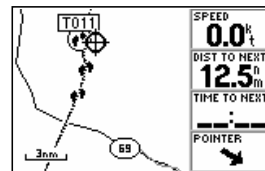
### To create and activate a TracBack route:

1. Enable track log recording and leave the GPS III+ on to automatically record track log positions while under way. Refer to page 69 for more information on track log settings.
2. Press MENU twice to display the Main Menu.
3. Highlight 'Track Logs' and press ENTER.
4. Highlight the desired track log ('Active Log' or 'Saved Logs') and press MENU to display the options list.
5. Highlight 'TracBack' and press ENTER to create/activate the TracBack route. (A message box will appear while the GPS III+ analyzes the data and creates the route.)



Once a TracBack has been activated, the GPS III+ will take the track log currently stored in memory and divide it into route segments, called 'legs'. Up to 30 track log waypoints (labeled 'T###', e.g. 'T001') will be created to mark the most significant features of the track log in order to duplicate your path as closely as possible. To gain the most benefit from the TracBack feature, keep the following tips in mind:

- Always clear the track log at the point you want to return to (boat ramp, dock, trailhead, etc.)
- The 'Record Mode' on the Track Logs Page must be set to 'Wrap' or 'Fill'.
- There must be at least two track log points stored in memory to create a TracBack route.
- If there is not enough available memory to add more waypoints and create a TracBack route, you will be alerted with a 'waypoint memory full' message. The receiver will use the available waypoints to create a route with an emphasis on the track log data closest to the destination. Also, existing TracBack waypoints ('T###') that are not contained in routes will be erased to free more memory. The GPS III+ will create new waypoints using the first available three-digit number.
- If the Track Logs Page 'Interval' field is set to 'Time', the route may not follow your exact path. (Keep the 'Interval' field set to 'Resolution' for best results.)
- If the receiver is turned off or satellite coverage is lost during your trip, TracBack will draw a straight line between any point where coverage was lost and where it resumed.
- If there are frequent changes in direction and distance in your track log, 30 waypoints may not accurately depict your exact path. The receiver will then assign the 30 waypoints to the most significant points of your track log, and simplify segments with fewer changes in direction.



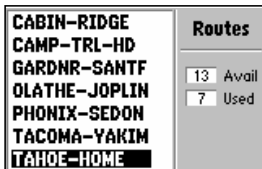
*A TracBack route contains a series of waypoints labeled 'T###' that approximate your previous route of travel.*



*'Wrap' will overwrite the old track log data in memory, once all memory has been used. 'Fill' will record data until memory is full, then stop.*

# REFERENCE

## Routes



To display the Route List, showing all routes stored in memory, select 'Routes' from the Main Menu.



To create a new route, select 'New Route' from the Route Options and enter the identifiers for the route waypoints in the sequence you wish to follow them.

Route navigation allows you to manually create a sequence of intermediate waypoints which lead you to your final destination. The GPS III+ will store up to 20 reversible routes, with up to 30 waypoints in each route. Routes can be created and modified by text entry (using the rocker keypad to enter waypoint names) or directly from the map display. Using the map display allows you to see each route graphically on-screen as you create, review, modify or navigate the route. All of the GPS III+'s route functions are accessed through the Main Menu.

### To create a new route by entering the name of each waypoint:

1. Press MENU twice to display the Main Menu.
2. Highlight 'Routes' and press ENTER. The Route List is displayed, showing all routes stored in memory.
3. Press MENU to display the Route Options.
4. Highlight 'New Route' and press ENTER. The GPS III+ creates a route called 'EMPTY-1'. (The name changes as you add waypoints to the route, so make note of the route name for future reference.)
5. Highlight the first waypoint name field and press ENTER to begin entering the name of an existing waypoint in memory.
6. Use the rocker keypad to enter the name of the route waypoint.
7. Press ENTER to accept the selected route waypoint.
8. Highlight the next waypoint name field, press ENTER and repeat steps 6 & 7 until all the waypoints have been added to the route.

**To create a route from the map display:**

1. Press MENU twice to display the Main Menu.
2. Highlight 'Routes' and press ENTER. The Route List is displayed, showing all routes stored in memory.
3. Press MENU to display the Route Options.
4. Highlight 'New Route' and press ENTER. The GPS III+ creates a route called 'EMPTY- 1'. (The name changes as you add waypoints to the route, so make note of the route name for future reference.)
5. Press MENU to display the New Route Options and highlight 'Show Map'.
6. Press ENTER and use the rocker keypad to place the arrow over the first route waypoint. (Use the IN and OUT zoom keys to aid in locating the desired waypoint.)
7. Press ENTER to accept the selected route waypoint.
8. Highlight the next waypoint on the map display and press ENTER to add the waypoint to the route. Repeat this step until all route waypoints have been added to the route. Press PAGE or QUIT to exit the page.
9. You can also create route waypoints during this process. If no waypoint exists at the arrow location, the GPS III+ will automatically create one—using a three digit number as the waypoint's name. (You can rename the waypoint following the steps on page 49.)
10. If you wish to include a city location in the route, place the arrow over the city and press ENTER. A confirmation page will appear with the name of the city as a new waypoint (sometimes abbreviated, depending on the length of the original name). To add to the route, select 'Use' and press ENTER.

As you add each new waypoint to the route, the data window at the top of the map display will show the name of the route you are creating, which includes the first and last waypoints in the route. A solid route line will appear on the map to indicate each leg, and a dotted line will appear to indicate the distance and bearing from the last route waypoint to the cursor position.



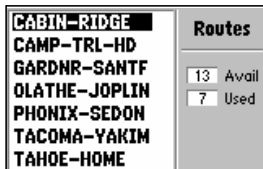
To create a route directly from the map display, select 'New Route' from the Main Menu, then select 'Show Map' from the New Route Options.



You can add city (or highway exit) locations to a route by placing the editing arrow on a city (or highway exit) and pressing ENTER.

# REFERENCE

## Route List



The Route List shows all routes currently stored in memory. Highlight the desired route and press ENTER to see the Route Plan Page.



Activating a route tells the GPS III+ you wish to use this route for navigation guidance.

The GPS III+'s Route List displays all the routes currently stored in memory, along with a descriptive name for each route. Once a route has been created, it can be activated and used for navigation from the Route List. A route may be followed in the same sequence as it was originally created, or you can invert the route and navigate from the end waypoint back to the beginning waypoint.

### To activate a route:

1. Press MENU twice to display the Main Menu.
2. Highlight 'Routes' and press ENTER. The Route List is displayed, showing all routes stored in memory.
3. Highlight the desired route and press MENU to display the Route Options.
4. Highlight 'Activate' and press ENTER to navigate the route in sequence.

### To deactivate the route and stop using it for navigation:

1. Press PAGE repeatedly to display the Active Route Page. (See page 64.)
2. Press MENU to display the Active Route Options.
3. Highlight 'Deactivate' and press ENTER to stop navigating the currently selected route.

The Route List also allows you to enter your own 13-character name for any listed route. By default the name includes the first and last waypoints in the route.

### To enter a custom route name:

1. Press MENU twice to display the Main Menu.
2. Highlight 'Routes' and press ENTER. The Route List is displayed, showing all routes stored in memory.

3. Highlight the desired route and press ENTER to display the Route Plan Page.
4. Highlight the name field and press ENTER to begin editing.
5. Use the rocker keypad to enter the desired name and press ENTER when finished.

### Route Editing

Once a route is added to memory you can review and/or edit the route from the Route Plan Page. The Route Plan Page shows the sequence of waypoints for the selected route and provides additional options to depict the route layout on the map display, insert waypoints, remove waypoints or perform trip/fuel planning functions.

#### To edit a route:

1. From the Route List, highlight the route you wish to edit and press ENTER. The Route Plan Page appears for the selected route.
2. To change a route waypoint, highlight the waypoint you wish to change and press ENTER. Use the rocker keypad to enter the new waypoint and press ENTER.
3. To review the information for a route waypoint, highlight the desired waypoint and press MENU. A pop-up menu appears with additional options. Highlight 'Review Wpt' and press ENTER to display information for the selected waypoint.
4. To insert a waypoint in the route, highlight the waypoint that will immediately follow the new route waypoint and press MENU. A pop-up menu appears with additional options. Highlight 'Insert Wpt' and press ENTER to display a blank line for the new waypoint. Enter the name of the new waypoint, using the rocker keypad, and press ENTER.
5. To delete a waypoint from the route, highlight the waypoint you wish to delete and press MENU. A pop-up menu appears with additional options. Highlight 'Remove Wpt' and press ENTER.



The Route Plan Page allows for easy editing of an existing route.

CABIN-RIDGE		Route Plan
Waypoint	Distance	
CABIN	0.00 <sup>m</sup>	
STAND1	3.20 <sup>m</sup>	
STAND2	5.84 <sup>m</sup>	
RIDGE	10.3 <sup>m</sup>	
-----	----- <sup>m</sup>	TOTAL
		10.3 <sup>m</sup>

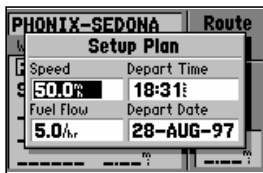
To edit the route, highlight the route waypoint which is affected by the change. If inserting a waypoint, highlight the waypoint which follows the new waypoint.

# REFERENCE

## Route Editing / Planning



The 'Show Map' option allows you to change the route from the map display. Place the arrow on the point affected by the change and press MENU to display editing options.



With the Route Plan Page displayed, use the LEFT/RIGHT keys on the rocker keypad to select the trip planning features. Press MENU and select 'Setup Plan' to define departure time, fuel usage and speed.

6. To edit the route from the map display, press MENU from the Route Plan Page. Highlight 'Show Map' and press ENTER. Use the rocker keypad to place the cursor on the desired waypoint and press MENU. A pop-up menu appears. Select the desired option and press ENTER. If 'Move' is selected, move the cursor to the desired location and press ENTER to accept the change.

## Route Planning

The Route Plan Page also displays trip planning information for each leg or the entire route. Available information includes desired course, time to waypoint, distance to waypoint, required fuel and sunrise/sunset times at the waypoint location.

### To use the trip planning features:

1. To select the desired planning figure, highlight the desired route from the Route List and press ENTER to display the Route Plan Page. One of ten available planning figures appears to the right of each route waypoint. Use the LEFT/RIGHT keys on the rocker keypad to select the desired item.
2. To enter planning information, Press MENU and select 'Setup Plan' from the options list. Enter the figures for speed, fuel flow, departure time and departure date. Press QUIT to return to the Route Plan Page.



**NOTE:** Fuel flow rates on your GPS III+ are measured in "units per hour". System setting changes for units of measure (statute, nautical or metric) do not affect the fuel flow measure. You should enter fuel flow rates based upon available information for your vehicle (operator's manual, performance specifications, etc.) and make note of the desired units of measure (gallons, liters, etc.)

When a route is highlighted on the Route List, additional functions are available from the Route Options.

**To display the Route Options, press MENU (with the Route List displayed).**

The following options are available:

**New Route**— allows you to create a new route, as described on page 58.

**Activate Route**— allows you to navigate the route in the same sequence it was originally created, as described on page 60.

**Copy**— allows you to copy the selected route to a new route. The copy function can be used to save a TracBack route for future use. The copy function is also useful for duplicating an existing route before making changes.

**To copy a route:**

1. Highlight the desired route on the Route List and press MENU.
2. Highlight 'Copy' and press ENTER.
3. The Route Plan Page will appear for the duplicate route and the name for the new route will be identical to the original, but followed by a number (e.g. 'HOME-CAMP 1').

**Delete Route**— allows you to remove the selected route from memory. The waypoints contained in the route will still appear in memory, but not as part of the route.

**To delete a route from memory:**

1. Highlight the desired route on the Route List and press MENU.
2. Highlight 'Delete Route' and press ENTER. A confirmation page will appear.
3. Press ENTER to delete the route (or QUIT to cancel).



'Copy' allows you to make a duplicate of a route before making editing changes.



'Delete' will remove the selected route from memory, but not the waypoints contained in the route.

# REFERENCE

## Route Options / Active Route

CABIN-RIDGE		Active Route
Waypoint	Distance	
CABIN	---	
▶STAND1	3.19 <sup>m</sup>	
STAND2	5.52 <sup>m</sup>	
RIDGE	9.36 <sup>m</sup>	
-----	---	
TOTAL		9.36 <sup>m</sup>

The Active Route Page shows the route currently being used for navigation guidance. The next waypoint in the route is denoted by an arrow on the left-hand side of the screen.



Selecting a GOTO destination along the current route will take you directly to that waypoint, then continue with the remainder of the route.

**Delete All**— allows you to remove all routes from memory. The waypoints contained in all stored routes will remain in memory, but not as part of any route.

### To delete all routes from memory:

1. Highlight 'Delete All' and press ENTER. A confirmation page will appear.
2. Press ENTER to delete all routes (or QUIT to cancel).

### Active Route Page

The last page appearing in the main sequence (using the PAGE or QUIT keys) is the Active Route Page. Whenever you have activated a route, GOTO, MOB or TracBack, the Active Route Page will show each waypoint (by name) of the active route, along with the desired course, distance to waypoint, time to each waypoint, fuel requirements or sunrise/sunset times at each route waypoint. As you navigate the route, the information on the Active Route Page will automatically update to indicate the destination waypoint and any remaining interim waypoints—with the next point along the route denoted by an arrow on the left-hand side of the screen.

From the Active Route Page you can change the name of the active route (see page 60), review information on a route waypoint (see page 45) or bypass route waypoints and GOTO any waypoint in the route (see page 54). The user-selectable data field on the right side of the page also keeps you informed of current conditions. There are ten different data items available. See page 91 for data type descriptions.

**To change the Active Route Page data, press the LEFT/RIGHT keys on the rocker keypad.**



Many features of the GPS III+ are menu driven. Each of the main pages has an options menu, allowing you to custom tailor the corresponding page to your preferences and/or select special features which specifically relate to that page.

**To display the Active Route Page Options, press MENU (with the Active Route Page displayed).**

The following options are available:

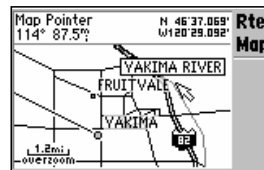
**Show Map**— allows you to view the area around the active route. When selected, 'Show Map' will show the map display centered around the first waypoint in the active route.

**Setup Plan**— displays a trip planning screen, allowing you to plan and review distance, fuel, time en route and sunrise/sunset information for the selected route.

**To use the trip planning features:**

1. Highlight 'Setup Plan' and press ENTER. The trip planning screen is displayed, showing speed, fuel flow, departure time and departure date information.
2. Enter an hourly fuel flow (if desired) in the fuel field, using the same steps above. Fuel flow rate units (gallons, liters, etc.) are not specified on the GPS III+. Enter these figures based upon available information for your vehicle and make note of the desired units.
3. Press QUIT to return to the Route Plan Page, then use the LEFT/RIGHT keys on the rocker keypad to review the planning information.

**Re-evaluate**— reactivates the current route and selects the route leg closest to your current position as the active leg. The active leg defines the current 'from' and 'to' waypoints.



To view each waypoint along your route and the surrounding area, select 'Show Map' and use the panning arrow to move along your route on the map display.



'Setup Plan' allows you to define planned speed, fuel flow and departure time in order to review trip planning figures.

# REFERENCE

## Active Route Page Options



'Re-evaluate' will reactivate the current route and select the closest leg. This feature is handy if you stray well off course and later wish to return to the route.



To reverse the sequence of waypoints in the active route, select the 'Invert' option.

**Deactivate**— cancels navigation of the route you are currently using. See page 60.

**Invert**— reactivates the current route in reverse order and navigates from the end waypoint back to the beginning waypoint. See page 60.

**Insert Wpt**— allows you to insert an additional waypoint into the route, directly in front of the currently highlighted waypoint in the route. If no route waypoint is highlighted, this option is not available. See page 61 for route editing info.

**Remove Wpt**— removes the currently highlighted waypoint from the route. If no waypoint is highlighted, this option is not available. See page 61 for route editing information.

**Review Wpt**— allows you to view information for the currently highlighted waypoint in the route. If no route waypoint is highlighted, this option is not available. See page 51 for waypoint review information.

**Delete Route**— allows you to remove the current route from memory. The waypoints contained in the route will still appear in memory, but not as part of the route. See page 63.

The GPS III+'s Main Menu provides access to the waypoint, route, track log, timer and setup features of the receiver. The Main Menu can be accessed at any time using the MENU key.

**To display the Main Menu, press the MENU key twice.**

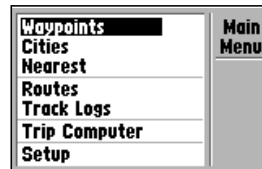
The 7 menu options are divided into categories by function: waypoints/cities/nearst locations, routes/track logs, trip computer, and system setups.

**To select an option from the Main Menu, highlight the desired item and press ENTER.**

The following menu options are available (continued on the next five pages):

**Waypoints**— allows you to create, edit or delete waypoints. See pages 45-50.

**Cities**— allows you to search the built-in database for a particular city or town. The City Spell 'n Find Page will display the location, size/reference, bearing and distance to the selected city. (Categories for small towns and small/medium/large cities are provided, based on the population levels described on page 68.)

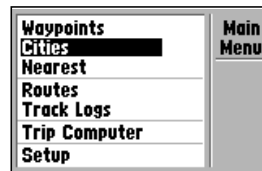


*Press MENU twice to display the Main Menu.*

### City Spell 'n Find

**To select a city and display it on the City Spell 'n Find Page:**

1. Highlight 'Cities' from the Main Menu and press ENTER.
2. The first character of the city name field should already be highlighted. Enter the name of the desired city using the ROCKER KEYPAD—UP/DOWN to change the highlighted character, and RIGHT to move to the next character. As you spell the name of the desired city, the GPS III+ will display the first entry in the built-in database which corresponds to the characters you have entered. If duplicate entries exist for the desired city, continue scrolling through the database entries using the UP/DOWN keys on the ROCKER KEYPAD. (When the same city name exists in several states/countries, pay particular attention to the 'State/Country' field directly below the city name field.)
3. Once the desired city is displayed, press ENTER to accept the selection.



*Select the desired menu option by highlighting it with the rocker keypad and pressing ENTER.*

# REFERENCE

## Main Menu: City Options

City Spell 'n Find	
ATLANTA	Done
State/Country	Reference
Georgia	-----
USA	Bearing
Position	106°
N 33°45.824'	Distance
W084°25.302'	567.5"

The City Spell 'n Find Page lets you retrieve information for any city in the built-in database.



The 'Show Map' Option allows you to view the area around the city location. Use the IN and OUT zoom keys to view the desired detail.

## City Spell 'n Find Options

To view the City Spell 'n Find Options, press MENU (with the City Spell 'n Find Page displayed).

The following options are available:

**Show Map** allows you to view the map area surrounding the selected city's position. While viewing the map display, you can also use the IN and OUT zoom keys to see additional detail.

**To view the map area around the city location:**

1. Select 'Show Map' and press ENTER.

**Save As Waypnt** creates a waypoint at the city location and saves it in memory. If the city name is longer than six characters, it will be abbreviated when creating the waypoint.

**To save an exit location as a waypoint:**

1. Select 'Save As Waypnt' and press ENTER.
2. With 'Done' highlighted, press ENTER to save the new waypoint.

**Show Reference / Show City Size** allows you to toggle between a reference waypoint field or size information. The reference waypoint field allows you to determine bearing and distance from any waypoint to the selected city. The size information block describes the size of the selected city as follows: Large cities are those with approximate populations greater than 200,000. Medium cities are greater than 50,000 and small cities are greater than 5,000. Small towns include those with approximate populations under 5,000 or towns of unknown size.



NOTE: When the 'Reference' field is left blank or the size information field is displayed, the 'Bearing' and 'Distance' information provided is from your current position.

## City Spell 'n Find Options (cont.)

**To select between size information and a reference waypoint field:**

1. Select 'Show City Size' or 'Show Reference' (as appropriate) and press ENTER. (When one of the options is selected, the other option will appear on the City Spell 'n Find Options menu.)
2. If 'Show Reference' is selected, the City Spell 'n Find Page will reappear.

**To enter a reference waypoint and display the bearing and distance from the waypoint to the selected city:**

1. Select the 'Show Reference' option, as described above.
2. With the cursor highlighting the reference waypoint field, press ENTER to begin entering the reference waypoint name.
3. Use the ROCKER KEYPAD to enter the name of the reference waypoint and press ENTER when finished. The bearing and distance from the reference waypoint to the city location will appear at the bottom right corner of the screen.

**Nearest**— displays up to nine nearest waypoints and 50 nearest cities within 200 miles of your present position, along with 50 exits on the nearest interstate highway. See page 51.

**Routes**— allows you to create, edit, activate or delete routes. See pages 58-62.

**Track Log**— lets you specify whether or not to record a track log (an electronic 'breadcrumb trail' recording of your path), define how it is recorded or save track log data for future use. The Track Logs Page also provides an indicator of the memory used for the active track log and options to clear the track memory or start a TracBack route. See pages 56-57 for TracBack information.

The Track Logs Page is divided in two main sections: one for the active log (the log currently being recorded) and available memory, and the second section showing any saved track logs and the total number saved. The active log stores up to 1900 track log positions, based upon the criteria specified in the Track Log Options. Up to 10 additional track logs may be saved in memory, with up to 250 track log positions in each saved log.

City Spell 'n Find	
Atlanta	Done
State/Country	Reference
Georgia	NEWNAN
USA	Bearing
Position	039°
N 33°45.824'	Distance
W084°25.302'	33.86"

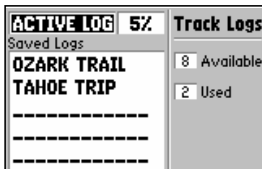
*'Show Reference' allows you to display bearing and distance (from any waypoint you have stored in memory) to the selected city.*

City Spell 'n Find	
Atlanta	Done
State/Country	Reference
Georgia	-----
USA	Bearing
Position	332°
N 33°45.824'	Distance
W084°25.302'	23.04"

*To clear the reference field (and use your present position instead) press LEFT side of the ROCKER KEYPAD until the reference waypoint field becomes blank, then press ENTER.*

# REFERENCE

## Main Menu: Track Logs



The Track Logs Page shows available memory for the active log (the log currently being recorded) and lists any saved track logs.



From the Track Logs Page, press MENU to view the Track Log Options.

## Track Log Settings

To view the Track Log Options, highlight 'Active Log' or any of the 'Saved Logs' (on the Track Logs Page) and press MENU.

The following options are available:

**TracBack** converts the track log data in memory into an inverted route (of up to 30 way-points) and begins navigation along the route. See pages 56-57.

**Save Active Log** extracts up to 250 of the most significant points along the active log, saves this information as a 'saved log', and clears the active log. Up to 10 saved logs may be stored in memory, along with a 13-character name. The default name is the date the log was saved, but you can specify any name you wish.

### To rename a saved log:

1. Highlight the saved log you wish to rename and press ENTER. An information box appears, showing the name of the saved log, the number of points in the track log and the total distance covered.
2. Highlight the track log name field and press ENTER.
3. Use the rocker keypad to enter the new name for the saved log. Press ENTER when finished.

**Clear Active Log / Delete Saved Log** clears the selected track log, active or saved, from memory. Highlight the 'Active Log' to display the 'Clear Active Log' option, or highlight any of the 'Saved Logs' to display the 'Delete Saved Log' option. You should select the 'Clear Active Log' option at the beginning of any trip where you'll want to convert the track log data into a TracBack route. See pages 56-57.

### To delete a track log:

1. Highlight the track log you wish to delete (active or saved) on the Track Logs Page, and press MENU to display the Track Log Options.
2. Highlight 'Clear Active Log' or 'Delete Saved Log' and press ENTER.
3. Press ENTER again to confirm (or press QUIT to cancel).

### Track Log Settings (cont.)

**Delete All** allows you to clear all track logs, active and saved, from memory.

**To delete all track logs from memory:**

1. Select 'Delete All' from the Track Log Options and press ENTER.
2. Press ENTER again to confirm (or QUIT to cancel).

**Setup Logging** provides a setup screen to define how track log data will be recorded. The Setup Logging Page provides options for 'Record Mode', 'Interval' and 'Interval Value'.

**Record Mode** lets you select one of three track recording options:

'Off' – No track log will be recorded.



NOTE: Selecting 'Off' may prevent you from using the TracBack feature.

'Fill' – A track log will be recorded until the track memory is full.

'Wrap' (default) – A track log will be continuously recorded, wrapping through available memory; replacing the oldest track data with new data.

**Interval** defines the frequency with which the track plot is recorded. Three interval settings are available:

'Resolution' (default) – Records track log based upon a user-defined variance from your course over ground. The resolution option is recommended for the most efficient use of memory and TracBack performance. The distance value (entered in the 'Interval Value' field) is the maximum left/right deviation allowed from the last defined ground track before recording a new point.

'Time' – Records track log based on a user-defined time interval.

'Distance' – Records track log based on a user-defined distance between points.

**Interval Value** defines the distance or time interval used to record the track log.



Select 'Save Active Log' to save the active log data for future use. This process extracts the most significant points along the active route (up to 250) and creates a 'saved log'.



The 'Setup Logging' option allows you to change the criteria used to record the active track log.

# REFERENCE

## Main Menu / Setup Menu

Trip Computer	
Trip Odometer	Average Speed
0.00 <sup>m</sup>	0.0 <sup>k</sup>
Trip Timer	Maximum Speed
00:00:00	0.0 <sup>k</sup>
Odometer	
	0 <sup>m</sup>

'Trip Computer' provides readouts for the trip odometer, trip timer, average speed and maximum speed. Options are provided to reset these figures.

Simulator	System	Units	Time
Mode	Speed		
Simulator On		0.0 <sup>m</sup>	
Track Control	Track		
Auto Track		225 <sup>o</sup>	
Altitude			
1252 <sup>o</sup>			

The 'Setup' option uses file tabs (across the top of the page) for quick selection/review of unit settings.

**Trip Computer**— provides readouts for average speed, maximum speed, odometer, trip odometer and trip timer. These readouts can be reset from the Trip Computer Options.

### To reset a trip computer readout(s):

1. Press MENU (with the Trip Computer Page displayed). An options list is displayed.
2. To reset all trip computer readouts, highlight 'Reset All' and press ENTER.
3. To reset a single readout item, highlight the desired option and press ENTER.
4. To log trip time only while moving, highlight 'Use Time Moving' and press ENTER. If this option is selected, 'Use Total Time' will appear instead. This latter option logs trip time any time the GPS III+ is on and has a position fix.



NOTE: The 'Reset Trip' option resets trip odometer, trip timer and average speed readouts.

Waypoints	Main Menu
Cities	
Nearest	
Routes	
Track Logs	
Trip Computer	
Setup	

**Setup**— provides a group of pages to perform various system setup functions, including selection of position format, units of measure, setting various alarms, configuring the display orientation and backlighting. Each available page is denoted by a 'file tab' which identifies the function of that page.

**To select a Setup option, highlight the file tab for the desired function. The information is automatically displayed when the file tab is highlighted.**



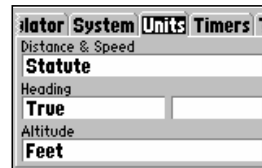
# REFERENCE

## Setup Menu

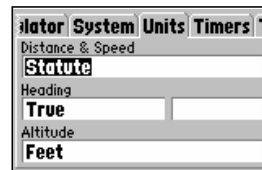
The file tab headings and setup functions for these pages are:

Simulator	Enable/Disable; Settings for simulated Track, Speed and Altitude
System	Backlight timeout, Battery type, Power Saver Mode and Display Orientation
Units	Units of measure settings for – Distance & Speed, Heading and Altitude
Timers	Count up/down User Timer, Battery Timer, and usage timers for current day and since new
Time	Formats for local 24 hour, local 12 hour (AM/PM) or UTC; Difference setting from UTC to local time
Alarms	Alarm Clock, Arrival Alarm, Off Course Alarm
Position	Position Format (latitude/longitude, UTM/UPS, Maidenhead, regional grids); Map Datum selection
Interface	Format (NMEA, RTCM, GARMIN proprietary); Mode setting for use with PC or a second unit

The following pages describe, in more detail, the available settings for each Setup file tab item.



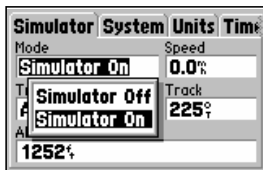
To display the desired information, highlight the appropriate file tab (using the LEFT/RIGHT keys on the rocker keypad).



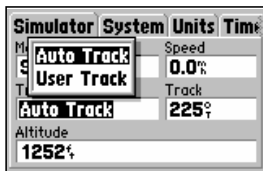
Once the desired tab is selected, use the UP/ DOWN keys on the rocker keypad to select the desired item on the page.

# REFERENCE

## Setup Menu: Simulator



*'Simulator' allows you to configure the built-in simulator feature.*



*The 'Track Control' setting allows the simulator to automatically "line up" on the correct bearing to a destination waypoint.*

## Simulator Settings

**Mode** lets you turn the built-in simulator on or off.

### To enable/disable the built-in simulator:

1. Highlight the 'Mode' field and press ENTER.
2. Select 'Simulator Off' or 'Simulator On' (as desired) and press ENTER.

**Speed** lets you select a simulated speed when the simulator is enabled.

**Track Control** allows the built-in simulator to automatically align track heading to the desired course (when using a GOTO or route), or allows you to manually adjust the track heading, as desired.

**Track** allows you to manually enter a track heading. This setting is only available when Track Control is set to 'User Track'.

**Altitude** allows you to specify a user-defined altitude for your simulated position.

### To select a simulator setting:

1. For track control, highlight the 'Track Control' field and press ENTER. Select 'Auto Track' or 'User Track' and press ENTER.
2. For simulated speed, user track, or altitude, highlight the desired field and press ENTER. Enter the desired value using the rocker keypad and press ENTER when finished.

### System Settings

**Backlight** lets you keep the screen/keypad backlighting on continuously ('always on') when selected, or enable the automatic shutoff to preserve battery life. Automatic shutoff times from 15 seconds to 4 minutes (since last key press) are available.

#### To set the backlight timeout:

1. Highlight the 'Backlight' field and press ENTER.
2. To keep backlighting on continuously, select 'Always On' and press ENTER, **OR**
3. To set a timeout duration, select the desired time period and press ENTER.

**Battery** is used to designate the type of batteries currently being used to power your GPS III+: Alkaline, Lithium or NiCad. This setting ensures accurate readings from the battery gauge on the Satellite Status Page (see page 27).

**Power Saver** is suitable for most applications and offers position updates which adapt to your needs while extending battery life. The GPS III+ will operate up to 36 hours when using Power Saver mode.

#### To select power saver mode:

1. Highlight the 'Power Saver' field and press ENTER.
2. Use the UP/DOWN keys on the ROCKER KEYPAD to select 'ON' (or 'OFF') and press ENTER.

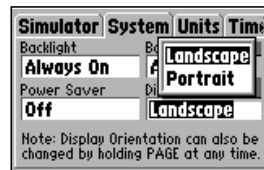
**Display** allows you set the display orientation to horizontal ('Landscape') or vertical ('Portrait').



NOTE: Display orientation can also be changed by pressing and holding the PAGE key.

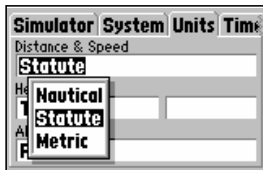


Set the 'Backlight' field to 'Always On' to prevent the backlighting from timing out and turning off automatically.

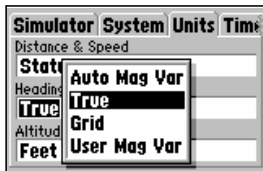


Display orientation is adjustable by pressing and holding the PAGE key, or from the 'System' settings.

## Setup Menu: Units



Select nautical, statute or metric units of measure from the 'Units' settings.



The 'User Mag' option allows you to define the magnetic variation for your area. 'Auto Mag Var' is the preferred setting in most cases.

## Units Settings

**Distance & Speed** lets you select the desired units of measure for distance and speed readouts in 'Nautical', 'Statute' or 'Metric' terms.

**Heading** lets you select the reference used in calculating heading information. You can select from 'Auto Mag Var', 'True', 'Grid' and 'User Mag Var'. 'Auto Mag Var' provides magnetic north heading references which are automatically determined from your current position. 'True' provides headings based upon a true north reference. 'Grid' provides headings based on a grid north reference (and is used in conjunction with the grid position formats described on page 80). 'User Mag Var' allows you to specify the magnetic variation at your current position and provides magnetic north heading references based upon the variation you enter.

**Altitude** lets you select altitude readouts in 'Feet' or 'Meters'.

### To select a units setting:

1. Highlight the desired field and press ENTER to display the available options.
2. Select the desired option and press ENTER.
3. If 'User Mag Var' is selected in the 'Heading' field, highlight the heading reference field (immediately to the right) and press ENTER. Enter the magnetic variation at your current position using the rocker keypad and press ENTER.



**WARNING:** If 'User Mag Var' is selected, you must periodically update the magnetic variation as your position changes. Using this setting, the GPS III+ will not automatically calculate and update the magnetic variation at your present position. Failure to update this setting may result in substantial differences between the information displayed on your GPS III+ and external references, such as a magnetic compass.

## Timers Settings

**User Timer** lets you select a count up or count down timer. For a count down timer you may also specify the count down duration.

**To select a user timer setting:**

1. For a count down timer, highlight the 'User Timer' field in the right-hand column, press ENTER and enter the count duration using the rocker keypad. Press ENTER to accept, then—with the left-hand column highlighted—press ENTER to view the User Timer options. Select 'Down' and press ENTER.
2. For a count up timer, highlight the 'User Timer' field in the left-hand column, press ENTER and select 'Up'. Press ENTER to confirm.
3. To reset the timer or turn the timer off, highlight the 'User Timer' field in the left-hand column, press ENTER and select 'Reset' or 'Off' (as appropriate). Press ENTER to confirm.

**Battery Timer** provides a running count of how long the GPS III+ has been in operation with the current batteries. The timer automatically stops when using an external power source. The timer will automatically reset when depleted batteries are replaced, but can also be manually reset.

**To select a battery timer setting:**

1. Highlight the 'Battery Timer' field in the left-hand column and press ENTER.
2. Select 'Off', 'On' or 'Reset' (as appropriate) and press ENTER.

**Since Midnight** provides a running count of how long the GPS III+ has been in operation since midnight of the current day.

**Since Factory Reset** provides a running count of total GPS III+ operating time since the receiver was shipped from the factory.



The 'User Timer' option provides both count up and count down timers.



The battery timer will automatically reset when depleted batteries are replaced with a fresh set.

# REFERENCE

## Setup Menu: Time

System	Units	Timers	Time
Time Format			
Local 24hr			
Local Time Zone			
05:00	Behind UTC		
Time		Date	
11:00:34	29-AUG-97		

Enter an offset amount to adjust the time display to your local area. In the United States, all offset amounts will be 'Behind UTC'.

System	Units	Timers	Time
Time Format			
Local 24hr			
Local Time Zone			
Local 24hr	Behind UTC		
Local 12hr	Behind UTC		
UTC	Behind UTC		
Time		Date	
		29-AUG-97	

If you're unsure of the exact offset, select a 'Local' time format, then enter offset values until you arrive at the correct local time.

## Time Settings

**Time Format** allows current time to be displayed using a 12- or 24- hour clock. This field is also used to select between local and UTC time readouts.

### To select a time format:

1. Highlight the 'Time Format' field and press ENTER to display the available options.
2. Select 'Local 24hr' or 'Local 12hr' to display local time references. 'Local 12hr' will show current time using a traditional AM/PM format, **OR**
3. Select 'UTC' to display universal time references (also referred to as 'Greenwich' or 'zulu' time).

**Local Time Zone** is used to define the current local time. UTC date and time are calculated directly from the satellites' signals and cannot be edited. If you prefer to use local time, you may designate an offset, either 'Behind UTC' or 'Ahead of UTC'. The offset is the difference, in hours and minutes, between local time and UTC time.

### To enter the local time zone:

1. Highlight the 'Local Time Zone' field and press ENTER.
2. Select the desired offset amount (in hours and minutes) using the rocker keypad and press ENTER.
3. Highlight the offset direction field (immediately to the right) and press ENTER.
4. Select 'Behind UTC' or 'Ahead of UTC' (as appropriate) and press ENTER.

**Time** displays the current time based on the settings made above and information provided by the satellites received.

**Date** displays the current date based on the settings made above and information provided by the satellites received.

### Alarms Settings

**Clock Alarm** uses the internal clock to provide an 'Alarm Clock' message at the time you set.

#### To enable/disable the alarm clock:

1. Highlight the 'Clock Alarm' field and press ENTER.
2. Select 'On' or 'Off' (as desired) and press ENTER.
3. If enabling the alarm, highlight the time field (to the immediate right) and press ENTER. Enter the alarm time using the rocker keypad and press ENTER.



NOTE: The GPS III+ must be turned on when the alarm time is reached. Otherwise, the message will not occur.

**Arrival Alarm** provides an alarm message once you're within a set distance from your destination waypoint. As you approach the destination waypoint, an 'Arrival at \_\_\_\_' message occurs when you are within the alarm distance you entered.

**Off Course Alarm** provides an alarm message ('Off Course Alarm') when you deviate off course beyond the specified limits.

#### To set the arrival and/or off course alarms:

1. Highlight the 'Arrival Alarm' or 'Off Course Alarm' field and press ENTER.
2. Select 'On' or 'Off' (as desired) and press ENTER.
3. If enabling the alarm, highlight the alarm distance field (to the immediate right) and press ENTER. Enter the alarm distance using the rocker keypad and press ENTER.

Units	Timers	Time	Alarms	F
Clock Alarm				
Off		00:00:		
Arrival Alarm				
On		02.00		
Off Course Alarm				
Off		0.00		

An 'Approaching' message automatically appears one minute before reaching the destination waypoint. The arrival alarm allows you to set a distance-defined message.

Units	Timers	Time	Alarms	F
Clock Alarm				
Off		00:00:		
Arrival Alarm				
Off		0.00		
Off Course Alarm				
Off		0.50		

The 'Off Course Alarm' provides an alert if you drift off course beyond the limits you have set.

# REFERENCE

## Setup Menu: Position



Only the latitude/longitude, UTM/UPS and Maidenhead settings apply worldwide. The additional grid settings are only valid for a specific region.



Over 100 different datums are provided to allow the GPS III+ to correspond to various paper charts/maps. Use WGS 84 unless your chart specifies otherwise.

## Position Settings

**Position Format** is used to change the coordinate system in which a given position reading is displayed. The default format is latitude and longitude in degrees and minutes (hddd°mm.mmm'). The following additional formats are available:

- hddd.ddddd° — latitude/longitude in decimal degrees only
- hddd°mm'ss.s" — latitude/longitude in degrees, minutes, seconds
- UTM/UPS — Universal Transverse Mercator / Universal Polar Stereographic grids
- British Grid
- Swedish Grid
- Maidenhead
- German Grid
- Swiss Grid
- New Zealand
- Irish Grid
- Taiwan Grid
- User UTM Grid

**Map Datum** allows you to select the datum reference used to determine where a given position is. The default setting is 'WGS 84'. Although over 100 datums are available (as listed on page 88), you should only change the datum if you are using a map or chart that specifies a different datum. If no datum is specified, you may select each datum applicable to your region until you find the datum that provides the best positioning at a known point.



**WARNING:** Selecting the wrong map datum can result in substantial position errors. When in doubt, use the default WGS 84 datum for best overall performance.

### To change the position format and/or map datum:

1. Highlight the 'Position Format' or 'Map Datum' field and press ENTER.
2. Select the desired setting (using the rocker keypad) and press ENTER.



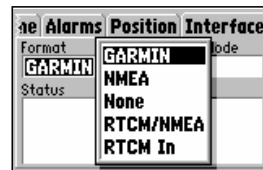
### Interface Settings

**Format** lets you control the input/output format used when connecting your GPS III+ to external NMEA devices, a DGPS beacon receiver, a personal computer, etc. Five format settings are available:

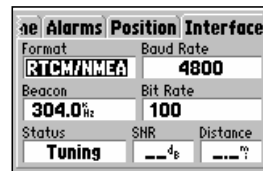
- GARMIN — the proprietary format used to exchange waypoint, route, track log data with a PC or with another GPS III+.
- NMEA — supports the input/output of standard NMEA 0183 version 2.0 data.
- None — provides no interfacing capabilities.
- RTCM/NMEA — allows Differential GPS (DGPS) input using a standard RTCM format and also provides NMEA 0183 version 2.0 output.
- RTCM In — allows DGPS input using a standard RTCM format, without any output capabilities.

#### To select an input/output format:

1. Highlight the 'Format' field and press ENTER.
2. Select the desired setting and press ENTER.
3. If the 'GARMIN' format is selected, highlight the 'Transfer Mode' field and press ENTER. Select the desired setting and press ENTER. The 'Transfer Mode' field allows you to specify what information to request or send to a second GPS III+. The 'Host' setting lets you control all data transfer functions from the second GPS III or from a PC.
4. If an 'RTCM' format is selected, additional fields are provided to control a GARMIN differential beacon receiver (e.g. GBR 21) directly from your GPS III+. You can enter the beacon frequency and bit rate on the GPS III+ and the information will be used to tune the beacon receiver. For more information, refer to the owner's manual for your GARMIN differential beacon receiver.



The 'GARMIN' option allows the GPS III+ to exchange data with a PC or another GPS III+. Use this setting with the optional PC Software Kit.



Select the 'RTCM/NMEA' option to use the GPS III+ along with a GARMIN Differential Beacon Receiver.

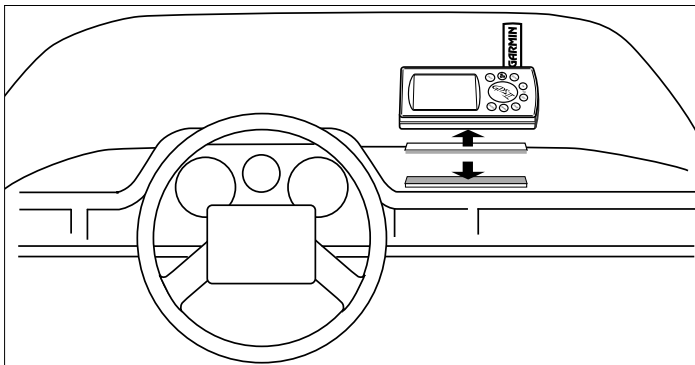
# APPENDIX A

## Dashboard Mounting

The GPS III+ can be mounted on the dashboard of an automobile or to another convenient surface using the two Velcro™ strips provided with the unit.

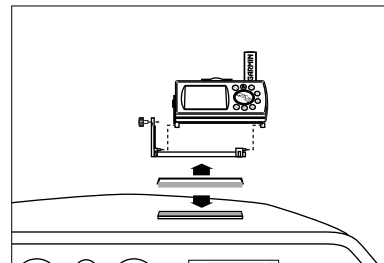
### To mount the GPS III+ using the Velcro strips:

1. Select a location for the unit that provides a clear and unobstructed view of the sky.
2. Remove the paper strip liners from both pieces of Velcro.
3. Make sure the surface to which you're adhering the Velcro is clean and dry. Place the adhesive side of the rough piece of Velcro on the desired mounting surface, and press into place.
4. Place the adhesive side of the smooth piece of Velcro on the bottom of the unit (between the rubber anti-skid bumps), and press into place.
5. Mount the unit, placing one piece of Velcro on top of the other.



### Optional Dash Mounting Bracket

An optional dash mount bracket is also available for your GPS III+. This bracket allows you to adjust the GPS III+ for best viewing angle, while installed on the dash of a vehicle. The dash mount bracket may be permanently installed or temporarily mounted using supplied Velcro fasteners.



The GPS III+ is constructed of high-quality materials and should not require user maintenance. If your unit ever needs repair, please take it to an authorized GARMIN service center. The GPS III+ has no user-serviceable parts. Never attempt any repairs yourself. To protect your GPS III+, keep it in its carrying case (optional accessory) when not in use, and never allow gasoline or other solvents to come into contact with the case. To clean the case and lens, use a soft cloth and a household window cleaner.

### PHYSICAL

**Case:** Fully-gasketed, high-impact plastic alloy, waterproof to IPX7 standards

**Size:** 6.15"H x 2"W x 1.23"D (15.6 x 5.1 x 1.23 cm)

**Weight:** Approx. 9 ounces (255g) w/ batteries

**Temperature Range:** 5 to 158°F (-15° to 70°C)†

**Memory Back Up:** Internal Lithium Battery

### PERFORMANCE

**Receiver:** Differential-ready PhaseTrac12™

**Acquisition Time:** Approx. 15 seconds (warm start)  
Approx. 45 seconds (EZinit/cold start)  
Approx. 5 minutes (AutoLocate™)

**Update Rate:** 1/second, continuous

Specifications subject to change without notice.

\* With optional GARMIN Differential Beacon Receiver Input (such as GARMIN GBR 21).

\*\* Subject to accuracy degradation to 100m 2DRMS under the U.S. DoD-imposed Selective Availability Program.

† The temperature rating for the GPS III+ may exceed the usable range of some batteries. Alkaline batteries can rupture at high temperatures.

‡ Alkaline batteries lose a significant amount of their capacity as temperature decreases. Use lithium batteries when operating the GPS III+ in below freezing conditions. Extensive use of screen backlighting will significantly reduce battery life.

**Position Accuracy:** 1-5 meters (3-15 ft) with DGPS corrections\*

15 meters (49 ft) RMS\*\*

**Velocity Accuracy:** 0.1 knot RMS steady state

**Dynamics:** Performs to specification to 6 g's

**Interfaces:** NMEA 183, RTCM (for DGPS corrections) and RS-232 for PC interface

**Antenna:** Detachable with standard BNC connector

### POWER

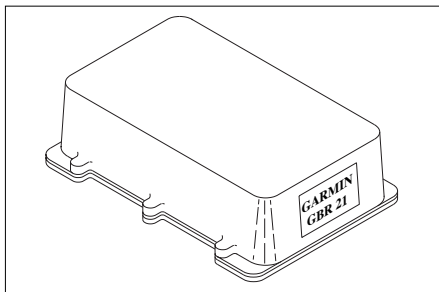
**Input:** Four 1.5-volt AA batteries† or 10-32 VDC external

**Power Consumption:** 0.5 watts max.

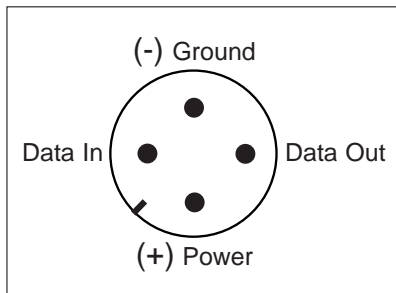
**Battery Life:** Up to 36 hours in Power Saver mode ‡

## APPENDIX C

### Wiring / Interfacing



GARMIN GBR 21 Differential Beacon Receiver



GPS III+ Connections (from back of unit)

Interfacing formats are selected from the Setup Menu, described on page 72. The input/output lines on your GPS III+ are RS-232 compatible allowing easy interface to a wide range of external devices, including PCs, differential beacon receivers, marine autopilots and/or a second GPS receiver.

The NMEA 0183 version 2.0 interface format is supported by the GPS III+ and enables the unit to drive up to three NMEA devices:

NMEA 0183 version 2.0 Approved sentences:

GPGGA, GPGLL, GPGSA, GPGSV, GPRMB, GPRMC, GPRTE, GPWPL, GPBOD

Proprietary sentences:

PGRME (estimated error), PGRMM (map datum), PGRMZ (altitude), PSLIB (beacon receiver control)

DGPS (Differential GPS) corrections are accepted in RTCM SC-104 version 2.0 format through the Data In line. A GARMIN Differential Beacon Receiver (such as the GBR 21) is recommended for use with the GPS III+. Other beacon receivers with the correct RTCM format may be used, but may not correctly display status or allow tuning control from the GPS unit.

The GPS III+ may be hard-wired to a vehicle's electrical system (10-32 VDC) using an optional power/data cable. Consult the wiring diagram to the right for proper connections. (The male connector on the back of the GPS III+ is illustrated.) A cigarette lighter adapter is also available to power your GPS III+ without making permanent connections.

Additional cables are available to connect your GPS III+ to a PC-compatible computer's serial port (PC Interface Cable) or to connect to a second GPS III+ (Data Cross-Load Cable). Contact your GARMIN dealer for any of these accessories.

The GPS III+'s antenna may be removed to allow attachment of an optional remote-mounted antenna. In some applications, using a remote-mounted antenna will dramatically increase the number of satellites received. The GPS antenna should be mounted in a location which provides an unobstructed view of much of the sky. A minimum of four satellites are needed to determine a three dimensional position. Satellite coverage will vary throughout the day, but may be checked at any time using the Satellite Status Page (see page 25). If satellite reception is limited in your particular installation, you may want to consider one of the following options:

**Remote Suction Cup Mount** – allows you to mount the standard detachable antenna up to 6 feet away from the GPS III+ unit, using a suction cup mount. This mount should only be used inside a vehicle.

**GA 26 Remote Antenna** – allows you to mount an amplified antenna outside the vehicle, up to 8 feet away, using supplied magnetic or suction cup mounts. Trunk lip and permanent flange mounts are also available.

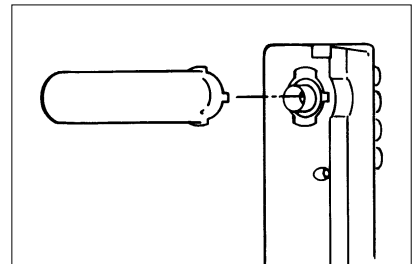
**GA 28 Remote Marine Antenna** - allows you to mount an amplified antenna outside the vehicle, up to 30 feet away, using a standard 1-inch marine antenna mount (not supplied). An optional extension cable allows you to mount the antenna up to 60 feet away.

#### To remove the attached antenna:

1. Rotate the antenna toward the rear of the unit as shown.

Note: The antenna can only be removed or installed in this position.

2. Pull the antenna gently away from the unit.
3. To install an optional external antenna, mate the BNC connector notches with the mounting posts and turn the knurled knob one-quarter turn clockwise.



# APPENDIX E

## Messages

The GPS III+ uses an on-screen message indicator to alert you to important information. Whenever the message appears, press ENTER to acknowledge the message and return to the previous page you were viewing. Messages are provided for system

status, waypoint/route editing, battery condition, etc. For your safety, pay careful attention to all messages.

**Alarm Clock**—The alarm clock time that was set from the Alarms submenu has been reached.

**Approaching**—You are one minute away from reaching a destination waypoint.

**Arrival at**—You have reached your destination waypoint.

**Battery Power Low**—The batteries are low and should be replaced.

**Data Transfer Complete**—The unit has finished uploading or downloading information to the connected device.

**Degraded Accuracy**—The unit's accuracy has been degraded beyond 500 meters due to poor satellite geometry or data quality. Check other navigational sources to verify the position indicated.

**Leg not Smoothed**—The upcoming route leg is too short for smooth waypoint transitions.

**Memory Battery Power Low**—The battery that sustains user memory is low and should be replaced by an authorized service center as soon as possible. Failure to do so may result in loss of stored data, including all user waypoints and routes.

**Need Altitude for 2D Nav**—The unit needs altitude input in order to start and/or continue 2D navigation.

**Need to Select Init Method**—You must select an initialization method so the unit can locate satellites and obtain a fix.

**No Differential GPS Position**—Not enough data is available to compute a DGPS position.

**No RTCM Input**—Beacon receiver is improperly connected or baud rates do not match.

**Off Course Alarm**—You are left or right of course, beyond the limits set on the Alarms submenu.

**Oscillator Needs Adjustment**—The GPS III+ has detected excessive drift in its internal crystal oscillator which may result in longer acquisition time. The unit should be taken to an authorized GARMIN service center.

**Poor GPS Coverage**—The unit cannot acquire the necessary number of satellites to compute a position. Try another location with a clearer view of the sky.

**Power Down and Re-init**—The unit cannot calculate a position due to abnormal satellite conditions. Turn power off and use other means to verify the last position shown. Try the unit again later, possibly in a different location.

**RAM Failed**—The GPS III+ has detected a failure in its internal memory. If the message persists, the GPS III+ is unusable and should be taken to an authorized GARMIN service center.

**Received Invalid Waypoint**—A waypoint was received during upload transfer that has an invalid identifier.

**Receiver Failed**—A failure in receiver hardware has been detected. If this message persists, do not use the unit and take it to an authorized dealer for repair.

**ROM Failed**—The permanent memory has failed and the unit is not operable. Take your unit to an authorized GARMIN dealer for repairs.

**Route Already Exists**—You have attempted to name a route with the same name currently in use with an existing route. Enter a different name for the route.

**Route Full**—You have attempted to add more than 30 waypoints to a route.

**Route Memory Full**—Route memory is full and no additional routes can be added from another GPS III+ or uploaded from a PC.

**Route Waypoint Deleted**—The waypoint being deleted was part of a route. The deleted waypoint is removed from waypoint memory and from the route.

**RTCM Input Failed**—DGPS data being received has been lost. You are no longer receiving the beacon signal.

### **Searching the Sky**

The GPS III+ is in searching the sky for almanac data or the unit is in AutoLocate mode.

**Steep Turn Ahead**—This message appears approximately one minute prior to a turn that requires a bank angle in excess of 25 degrees in order to stay on course.

**Stored Data Lost**—All waypoints, routes, time, and almanac data have been lost due to battery failure, or the receiver's memory has been cleared.

**Timer Expired**—The countdown timer has expired.

**Track Log Already Exist**—The name selected for the track log is identical to another track log already stored in memory.

**Track Memory Full**—You have used all track log points in the GPS III+. (The unit holds approximately 1900 points in the active track log.) Delete unwanted track points to make room for new entries.

**Using Simulator for Faster Data Transfer**—While using the PC Software Kit or the MapSource program, simulator mode is automatically selected to enable a higher data transfer rate.

**Waypoint Memory Full**—You have used all 500 waypoints in the GPS III+. Delete unwanted waypoints to make room for new entries.

**Waypoint Already Exists**—The name you are entering already exists in the GPS III+'s memory.

# APPENDIX F

## Map Datums

The following are the map datums available for the GPS III+. Menu Page abbreviations are listed first, followed by the corresponding map datum name and area. The default map datum for the GPS III+ is WGS 84.

<b>Adindan</b>	Adindan- Ethiopia, Mali, Senegal, Sudan	<b>Cape Canavrl</b>	Cape Canaveral- Florida, Bahama Islands
<b>Afgooye</b>	Afgooye- Somalia	<b>Carthage</b>	Carthage- Tunisia
<b>AIN EL ABD '70</b>	AIN EL ANBD 1970- Bahrain Island, Saudi Arabia	<b>CH-1903</b>	CH 1903- Switzerland
<b>Anna 1 Ast '65</b>	Anna 1 Astro '65- Cocos Isl.	<b>Chatham 1971</b>	Chatham 1971- Chatham Island (New Zealand)
<b>ARC 1950</b>	ARC 1950- Botswana, Lesotho, Malawi, Swaziland, Zaire, Zambia, Zimbabwe	<b>Chua Astro</b>	Chua Astro- Paraguay
<b>ARC 1960</b>	ARC 1960- Kenya, Tanzania	<b>Corrego Alegre</b>	Corrego Alegre-Brazil
<b>Ascnsn Isld '58</b>	Ascension Island '58- Ascension Island	<b>Djakarta</b>	Djakarta (Batavia)- Sumatra Island (Indonesia)
<b>Astro B4 Sorol</b>	Astro B4 Sorol Atoll- Tern Island	<b>Dos 1968</b>	Dos 1968- Gizo Island (New Georgia Islands)
<b>Astro Bcn "E"</b>	Astro Beacon "E"- Iwo Jima	<b>Easter Isld 67</b>	Easter Island 1967
<b>Astro Dos 71/4</b>	Astro Dos 71/4- St. Helena	<b>European 1950</b>	European 1950- Austria, Belgium, Denmark, Finland, France, Germany, Gibraltar, Greece, Italy, Luxembourg, Netherlands, Norway, Portugal, Spain, Sweden, Switzerland
<b>Astr Stn '52</b>	Astronomic Stn '52- Marcus Island	<b>European 1979</b>	European 1979- Austria, Finland, Netherlands, Norway, Spain, Sweden, Switzerland
<b>Astrln Geod '66</b>	Australian Geod '66- Australia, Tasmania Island	<b>Finland Hayfrd</b>	Finland Hayford- Finland
<b>Astrln Geod '84</b>	Australian Geod '84- Australia, Tasmania Island	<b>Gandajika Base</b>	Gandajika Base- Republic of Maldives
<b>Bellevue (IGN)</b>	Efate and Erromango Islands	<b>Geod Datm '49</b>	Geodetic Datum '49- New Zealand
<b>Bermuda 1957</b>	Bermuda 1957- Bermuda Islands	<b>Guam 1963</b>	Guam 1963- Guam Island
<b>Bogata Obsrv</b>	Bogata Obsrvatry- Colombia	<b>Guam 1963</b>	Guam 1963- Guam Island
<b>Campo Inchspe</b>	Campo Inchauspe- Argentina	<b>Gux 1 Astro</b>	Gux 1 Astro- Guadalcanal Island
<b>Canton Ast '66</b>	Canton Astro 1966- Phoenix Islands	<b>Hjorsey 1955</b>	Hjorsey 1955- Iceland
<b>Cape</b>	Cape- South Africa		



<b>Hong Kong '63</b>	Hong Kong '63- Hong Kong		
<b>Hu-Tzu-Shan</b>	Hu-Tzu-Shan- Taiwan		
<b>Indian Bngldsh</b>	Indian- Bangladesh, India, Nepal		
<b>Indian Thailand</b>	Indian- Thailand, Vietnam		
<b>Indonesia '74</b>	Indonesia 1974- Indonesia		
<b>Ireland 1965</b>	Ireland 1965- Ireland		
<b>ISTS 073 Astro</b>	ISTS 073 ASTRO '69- Diego Garcia		
<b>Johnston Island</b>	Johnston Island Kandawala- Sri Lanka		
<b>Kerguelen Islnd</b>	Kerguelen Island		
<b>Kertau 1948</b>	Kertau 1948- West Malaysia, Singapore		
<b>L. C. 5 Astro</b>	Cayman Brac Island		
<b>Liberia 1964</b>	Liberia 1964- Liberia		
<b>Luzon Mindanao</b>	Luzon- Mindanao Island		
<b>Luzon Philippine</b>	Luzon- Philippines (excluding Mindanao Island)		
<b>Mahe 1971</b>	Mahe 1971- Mahe Island		
<b>Marco Astro</b>	Marco Astro- Salvage Island		
<b>Massawa</b>	Massawa- Eritrea (Ethiopia)		
<b>Merchich</b>	Merchich- Morocco		
<b>Midway Ast '61</b>	Midway Astro '61- Midway		
<b>Minna</b>	Minna- Nigeria		
<b>NAD27 Alaska</b>	North American 1927- Alaska	<b>NAD27 Canal Zone</b>	North Am. 1927- Canal Zone
<b>NAD27 Bahamas</b>	North American 1927- Bahamas (excluding San Salvador Island)	<b>NAD27 Caribbn</b>	North American 1927- Caribbean (Barbados, Caicos Islands, Cuba, Dom. Rep., Grand Cayman, Jamaica, Leeward and Turks Islands)
<b>NAD27 Canada</b>	North American 1927- Canada and Newfoundland	<b>NAD27 Central</b>	North American 1927- Central America (Belize, Costa Rica, El Salvador, Guatemala, Honduras, Nicaragua)
		<b>NAD27 CONUS</b>	North Am. 1927- Mean Value
		<b>NAD27 Cuba</b>	North American 1927- Cuba
		<b>NAD27 Grnland</b>	North American 1927- Greenland (Hayes Peninsula)
		<b>NAD27 Mexico</b>	N. American 1927- Mexico
		<b>NAD27 San Sal</b>	North American 1927- San Salvador Island
		<b>NAD83</b>	North American 1983- Alaska, Canada, Central America, CONUS, Mexico
		<b>Nhrwn Masirah</b>	Nahrwn- Masirah Island (Oman)
		<b>Nhrwn Saudi A</b>	Nahrwn- Saudi Arabia
		<b>Nhrwn United A</b>	Nahrwn- United Arab Emirates
		<b>Naparima BWI</b>	Naparima BWI- Trinidad and Tobago
		<b>Obsrvtorio '66</b>	Observatorio 1966- Corvo and Flores Islands (Azores)
		<b>Old Egyptian</b>	Old Egyptian- Egypt

# APPENDIX F

## Map Datums

<b>Old Hawaiian</b>	Old Hawaiian- Mean Value
<b>Oman</b>	Oman- Oman
<b>Ord Srvy GB</b>	Old Survey Grt Britn- England, Isle of Man, Scotland, Shetland Isl., Wales
<b>Pico De Las Nv</b>	Canary Islands
<b>Ptcairn Ast '67</b>	Pitcairn Astro '67- Pitcairn Isl.
<b>Prov S Am '56</b>	Prov So Amrcn '56- Bolivia, Chile, Colombia, Ecuador, Guyana, Peru, Venezuela
<b>Prov S Chln '63</b>	Prov So Chilean '63- S. Chile
<b>Puerto Rico</b>	Puerto Rico & Virgin Islands
<b>Qatar National</b>	Qatar National- Qatar
<b>Qornoq</b>	Qornoq- South Greenland
<b>Reunion</b>	Reunion- Mascarene Island
<b>Rome 1940</b>	Rome 1940- Sardinia Island
<b>RT 90</b>	Sweden
<b>Santo (Dos)</b>	Santo (Dos)- Espirito Santo Island
<b>Sao Braz</b>	Sao Braz- Sao Miguel, Santa Maria Islands (Azores)
<b>Sapper Hill '43</b>	Sapper Hill 1943- East Falkland Island
<b>Schwarzeck</b>	Schwarzeck- Namibia

<b>Sth Amrcn '69</b>	South American '69- Argentina, Bolivia, Brazil, Chile, Colombia, Ecuador, Guyana, Paraguay, Peru, Venezuela, Trinidad and Tobago
<b>South Asia</b>	South Asia- Singapore
<b>SE Base</b>	Southeast Base- Porto Santo and Madiera Islands
<b>SW Base</b>	Southwest Base- Faial, Graciosa, Pico, Sao Jorge and Terceira Islands (Azores)
<b>Timbalai 1948</b>	Timbalai 1948- Brunei and E. Malaysia (Sarawak and Sabah)
<b>Tokyo</b>	Tokyo- Japan, Korea, Okinawa
<b>Tristan Ast '68</b>	Tristan Astro 1968- Tristan da Cunha
<b>Viti Levu 1916</b>	Viti Levu 1916- Viti Levu/ Fiji Islands
<b>Wake-Eniwetok</b>	Wake-Eniwetok- Marshall Isl.
<b>WGS 72</b>	World Geodetic System 1972
<b>WGS 84</b>	World Geodetic System 1984
<b>Zanderij</b>	Zanderij-Surinam

**Altitude**—Height above mean sea level (MSL).

**Avg Speed**—The average of all second-by-second speed readings since last reset.

**Bearing (BRG)**—The compass direction from your present position to a destination waypoint.

**Course**—The desired course between the active 'from' and 'to' waypoints.

**Distance (Dist)**—The 'great circle' distance from present position to a destination waypoint.

**Dist to Dest**—The 'great circle' distance from present position to a GOTO destination, or the final waypoint in a route.

**Dist to Next**—The 'great circle' distance from present position to a GOTO destination, or the next waypoint in a route.

**ETA**—Estimate Time of Arrival. The estimated time you will reach your destination waypoint, based on current speed and track.

**ETA at Dest**—The estimated time you will reach a GOTO destination, or the final waypoint in a route.

**ETA at Next**—The estimated time you will reach a GOTO destination, or the next waypoint in a route.

**Fuel**—The fuel required to travel from present position to the indicated route waypoint.

**Leg Dist**—The distance between two route waypoints.

**Leg Fuel**—The fuel required to travel from a route waypoint to the next waypoint (in sequence) in the route.

**Leg Time**—The time required to travel from a route waypoint to the next waypoint (in sequence) in the route.

**Max Speed**—The maximum second-by-second speed recorded since last reset.

**Odometer**—A running tally of distance travelled, based upon the distance between second-by-second position readings. Both the 'Odometer' and 'Trip Odometer' are resettable, however the 'Odometer' is typically used to keep track of total distance covered, where the 'Trip Odometer' is used to keep track of shorter point-to-point distances.

**Off Course**—The distance you are off a desired course in either direction, left or right. Also referred to as 'cross-track error' or 'course error'.

**Ref**—Reference Waypoint. Used to create a new waypoint, by specifying a bearing and distance from an existing (reference) waypoint.

**Speed**—The current velocity at which you are travelling, relative to a ground position. Also referred to as 'ground speed'.

**Time To**—The estimated time required to reach a GOTO destination, or the next waypoint in a route. Also referred to as 'estimated time enroute'.

**Time to Dest**—The estimated time required to reach a GOTO destination, or the final waypoint in a route.

**Time to Next**—The estimated time required to reach a GOTO destination, or the next waypoint in a route.

# APPENDIX G

## Navigation Terms

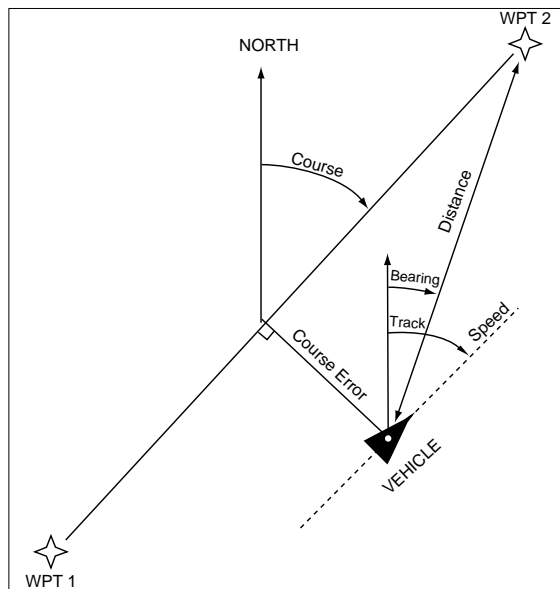
**To Course**—The recommended direction to steer in order to reduce course error or stay on course. Provides the most efficient heading to get back to the desired course and proceed along your route.

**Track**—The direction of movement relative to a ground position. Also referred to as 'ground track'.

**Trip Odometer**—A running tally of distance travelled since last reset. Also see 'Odometer'.

**Turn**—The angle difference between the bearing to your destination and your current track. 'L' indicates you should turn left, 'R' indicates you should turn right. The degrees indicate the angle you are off course.

**VMG**—Velocity Made Good. The speed you are closing in on a destination along a desired course. Also referred to as the 'vector velocity' to your destination.



**A**

Accuracy Circle . . . . .	39-40
Active Route Options . . . . .	39,65-66
Active Route Page . . . . .	16,64
Alarms . . . . .	73,79
Almanac . . . . .	4
Altitude . . . . .	91
Altitude Entry . . . . .	29
Antenna, Removing . . . . .	85
Arrival Alarm . . . . .	73,79
Arrow, panning . . . . .	20
AutoLocate™ Mode . . . . .	6,29
AutoZoom . . . . .	39-40
Averaging Positions . . . . .	31,45,50
Average Speed . . . . .	91

**B**

Backlight Timer . . . . .	73,75
Backlighting On/Off . . . . .	30,75
Battery Installation/Replacement . . . . .	3
Battery Level Indicator . . . . .	3,27,75
Battery Type . . . . .	27,75
Beacon Receiver Setup . . . . .	81
Bearing . . . . .	91
Bearing Pointer . . . . .	11,23,41
Big Numbers . . . . .	11,42

**C**

Cancel GOTO . . . . .	16,55
Cautions . . . . .	ii
Cities, on Map . . . . .	20,33,39-40
Cities, Nearest . . . . .	15,51
Cities, Spell 'n Find . . . . .	67-68
Common Exits . . . . .	35
Compass Page . . . . .	11,23,41
Compass Page Options . . . . .	42
Compass Ring . . . . .	11,23,41
Contrast . . . . .	25,30
Course . . . . .	91
Cursor . . . . .	2

**D**

Data Entry . . . . .	2
Date and Time Setup . . . . .	78
Default . . . . .	2
Detail, Map . . . . .	39
DGPS Setup . . . . .	81
Differential GPS (DGPS) . . . . .	26,81
Dilution of Precision (DOP) . . . . .	28
Display Features . . . . .	2
Distance . . . . .	91

**E**

Enter/Mark Key . . . . .	2
Estimated Position Error (EPE) . . . . .	28
Estimated Time of Arrival (ETA) . . . . .	91
Exit Services . . . . .	35-36
Exits . . . . .	35-36,52
Exits, Nearest . . . . .	51-52

**F**

Features . . . . .	1
Field . . . . .	2
File Tabs . . . . .	39,51,72
Fuel . . . . .	91

**G**

GOTO Function . . . . .	15,21,34,53-54
Cancelling . . . . .	16,55
From List . . . . .	15
From Map Display . . . . .	15
Key . . . . .	2
Nearest Waypoints . . . . .	53
Options . . . . .	54-55
GPS Overview . . . . .	4

# APPENDIX H

## Index

<b>H</b>	
Heading Selection	76
Highlight	2
Highway Display	12,24,43
Highway Page	12,24,43
Highway Page Options	44
Highway Exits	35,52
<b>I</b>	
Initialization	4-6,27,29
Installation, antenna	85
Installation, wiring	84
IN Zoom Key	2
Interface Formats	73,81,84
Interface Settings	73,81,84
Interstate Highway Exits	35
<b>K</b>	
Keypad Usage	2
<b>L</b>	
Lakes, on Map	39-40
Lat/Long Grid	39-40
Leg Distance	91
Leg Fuel	91
Leg Time	91
<b>M</b>	
Main Menu	13,67
Main Page Sequence	7,18
Map Datum List	88-90
Map Datum Selection	73,80
Map Detail	39
Map Orientation	10,19,39-40
Map Page	10,19,33-34
Map Page Options	37-40
Map Scale	10,19,33
Map Setup	39-40
Mark Position Page	14,22,45
Marking a Position	14,22,45-46
Maximum Speed	91
Measuring Between Waypoints	38
Menu Key	2
Messages	86-87
MOB Function	53,55
Mounting	82

<b>N</b>	
Navigation Basics	91-92
Navigation Units	76
Nearest Cities	15,51
Nearest Exits	51-52
Nearest Location Options	52
Nearest Locations List	51,64
Nearest Waypoints	15,51
NMEA Output Formats	84
<b>O</b>	
Off Course	79,91
Offset, local time	78
Odometer	91
Orientation, map	10,19
Orientation, screen	1,75
OUT Zoom Key	2
Output Setup	81

**P**

Package Contents	. . . . . i
Page Key	. . . . . 2
Page Sequence	. . . . . 7,18
Panning	. . . . . 20,33-34
Pointer Arrow	. . . . . 11,12,23-24
Position Averaging	. . . . . 31,45,50
Position Format	. . . . . 9,73,80
Position Page	. . . . . 9,30
Position Page Options	. . . . . 31-32
Power Key	. . . . . 2,7
Power Off	. . . . . 6
Power On	. . . . . 5,17
Power Saver Mode	. . . . . 73,75

**Q**

Quit Key	. . . . . 2,7
----------	---------------

**R**

Railroads, on Map	. . . . . 39-40
Receiver Status	. . . . . 8,26-27
Reference Waypoints	. . . 46-47,68-69
Rivers, on Map	. . . . . 39-40
Roads, on Map	. . . . . 39-40
Rocker Keypad	. . . . . 2

Routes	. . . . . 53,58-66
Active Route Page	. . . . . 64-65
Activating	. . . . . 60,63
Copying	. . . . . 63
Creating	. . . . . 58,63
Creating From Map	. . . . . 59
Deactivating	. . . . . 60,66
Deleting	. . . . . 63,66
Deleting All	. . . . . 64
Editing Routes	. . . . . 61-62,66
Inverting	. . . . . 62
List	. . . . . 60
Naming	. . . . . 60
Options	. . . . . 63-66
Planning	. . . . . 62,65
Route Plan Page	. . . . . 61-62

**S**

Satellite Status Page	. . . . . 8,25
Satellite Status Page Options	. . 28-29
Screen Backlighting	. . . . . 28
Screen Contrast	. . . . . 25,30
Screen Orientation	. . . . . 1,75
Scrolling	. . . . . 2
Services, at Exit	. . . . . 35-36,51
Setup Options	. . . . . 13,72-81

Sign Posts	. . . . . 44
Signal Strength Bars	. . . . . 8,25
Simulator Mode	. . . . 17-18,28,73-74
Simulator Tour	. . . . . 17-24
Sky View Display	. . . . . 8,25,28
Special Exits	. . . . . 35
Specifications	. . . . . 83
Speed	. . . . . 91
Spell 'n Find	. . . . . 48,67-68
Street/Road Labels	. . . . . 39-40
Submenus	. . . . . 13
System Setup	. . . . . 73,75

# APPENDIX H

## Index

### T

Time Format	78
Time Settings	73,78
Timers	73,77
TracBack Navigation	53,56-57,69-70
Track	92
Track Compass	9,12
Track Logs	56-57, 69-71
Clearing Active	56,70
Deleting	70
Deleting All	71
Naming	70
Options	70-71
Recording	56,69-71
Saving Active	70
Track Log Setup	39,56,69-71
Trip Computer	9,72
Trip Odometer	9,72,92
Trip Planning	62,65
Troubleshooting	6
Turn	92
2D Altitude	29

### U

Unit Features	1
Units of Measure	13,73,76
UTC time	78
UTM Coordinates	80

### V

Velocity Made Good (VMG)	92
--------------------------	----

### W

Warranty	iv
Waypoints	14,45-50,67
Comments	49
Create By Text	46
Create On Map	20,46
Deleting	48,50
Deleting All	48
Deleting by Symbol	48
Display Options	50
Edit Options	50
Editing	48-49
List Options	47-48
Marking	14,45
Naming	14,20,45-46
Nearest	51,53,69
Options	50

### Waypoints

Reference	47,68,91
Renaming	14,22,49
Reviewing	34,48
Sign Posts	44
Symbols	14,19,22,48-49
Waypoint Edit Page	48
Waypoint List Options	47
Waypoint List Page	46,67
Welcome Page	5,17
Wiring Installation	84

### Z

Zoom In/Out	10,19,33,36,39-40,43
Zoom Keys	2,19,36,43,68







© 1999 GARMIN Corporation

GARMIN International, Inc., 1200 E. 151st Street, Olathe, KS 66062

GARMIN (Europe) Ltd., Unit 5, The Quadrangle, Abbey Park Industrial Estate, Romsey SO51 9AQ UK

GARMIN (Asia) Corp., 3F, No. 1, Lane 45, Pao-Hsing Road, Hsin Tien, Taipei, Taiwan R.O.C.

Web Site Address: [www.garmin.com](http://www.garmin.com)

Part Number 190-00162-00 Rev. A